

TECHNICAL BULLETIN AutoDome 700 Series IP PTZ CCTV Camera

Compatibility with BVIP Software

October 28, 2011

Issue Severity:	Products Affected:
<input type="checkbox"/> High: Act immediately	<ul style="list-style-type: none">• VG5-7xx products
<input type="checkbox"/> Medium: Bosch Security Systems strongly recommends you take the action(s) described below.	
<input checked="" type="checkbox"/> Low: Advisory	

1.0 Compatibility

The following table summarizes the Bosch Video over IP software compatibility with the AutoDome 700 Series IP PTZ Camera:

BVIP Software	Version	
Bosch Video Client (BVC)	1.2	Compatible.
Video Recording Manager (VRM)	2.20	Compatible.
Divar 700 Digital Video Recorder	3.43	Compatible.
VIDOS	4.10	Compatible. VIDOS 4.10 is available only by special request. Contact your local technical support representative.
Bosch Video Management System (BVMS)	2.3, 3.0	Not compatible. BVMS does not recognize the AutoDome 700. Add the AutoDome 700 as a VG4 AutoDome device. Refer to Section 2, below, for a work around.
Bosch Recording Station (BRS)	8.8.1, 8.9	Not compatible. BRS does not recognize the AutoDome 700. Add the AutoDome 700 as an H.264 device. Refer to Section 2, below, for a work around.

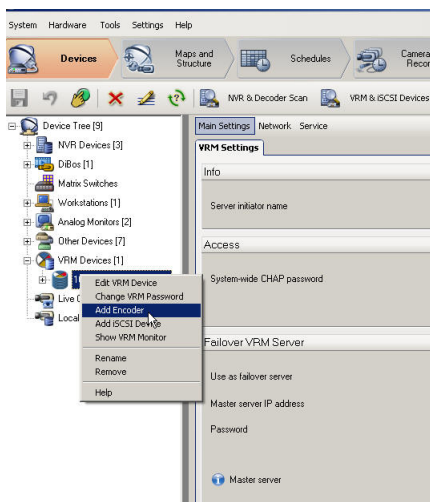
2.0 Resolution

The Bosch Video Management System and the Bosch Recording Station do not yet recognize the AutoDome 700 Series IP PTZ camera. In both software systems, you can manually add the AutoDome 700 as a different IP device. The following sections provide instructions to add the AutoDome 700 to the BVMS and to the BRS.

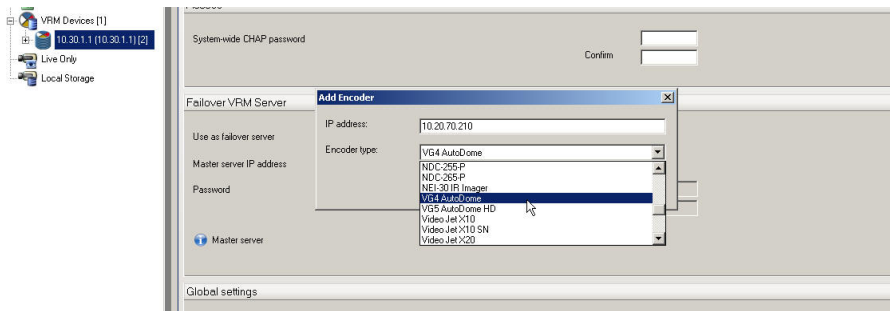
Adding an AutoDome 700 to the Bosch Video Management System

You must add the AutoDome 700 as a VG4 AutoDome device, and then activate the device to enable PTZ control.

1. Open the Configuration Client.
2. Type your username and password and choose your BVMS central server.
3. Click OK to access BVMS.
4. Right-click a device in the Device Tree in which you want to add the AutoDome 700. Then, select Add Encoder.



5. Type the IP Address for the AutoDome 700.
6. Select VG4 AutoDome from the type drop-down list.

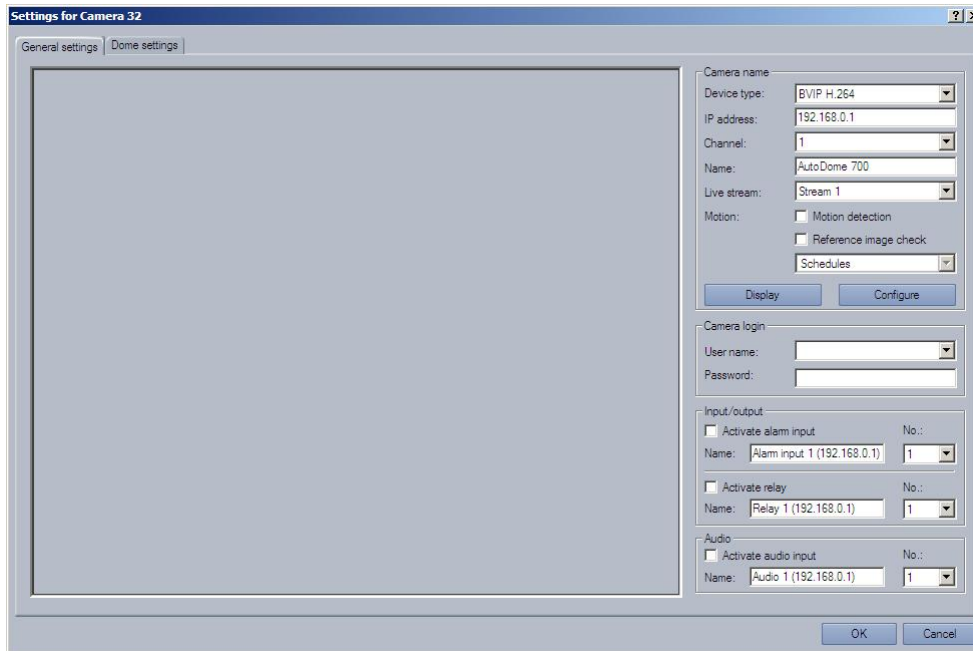


7. Select the camera options that you want to import into BVMS.
8. Click OK to add the AutoDome 700 (as a VG4 AutoDome device) to the tree.
9. Click the Save button, on the BVMS toolbar. Then click the Activate button to gain control of the AutoDome 700.

Adding an AutoDome 700 to the Bosch Recording Station

You must add the AutoDome 700 as an H.264 device, and then activate the device to enable PTZ control.

1. Login into the BRS.
2. Choose the File menu and select the Configuration option.
3. Click the Add button in the Network Devices box.
4. Select BVIP H.264 in the Device Type pull-down menu.
5. Type the IP Address for the AutoDome 700.
6. Type a descriptive name for the AutoDome 700 in the Name input box. Keep the default settings for the remaining parameters. The following graphic illustrates these settings (your IP address will be different):

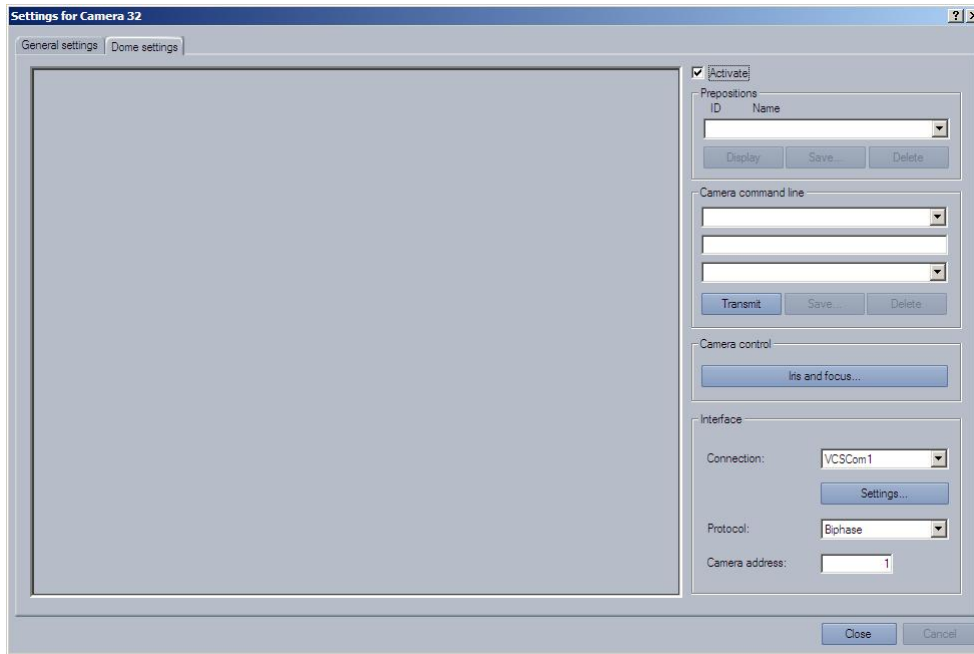


The screenshot shows a software window titled "Settings for Camera 32" with two tabs: "General settings" and "Dome settings". The "Dome settings" tab is active. The window contains several configuration fields and checkboxes:

- Camera name:** BVIP H.264 (dropdown)
- Device type:** BVIP H.264 (dropdown)
- IP address:** 192.168.0.1 (text input)
- Channel:** 1 (dropdown)
- Name:** AutoDome 700 (text input)
- Live stream:** Stream 1 (dropdown)
- Motion:** Motion detection, Reference image check, Schedules (dropdown)
- Buttons:** Display, Configure
- Camera login:** User name, Password
- Input/output:** Activate alarm input, Name: Alarm input 1 (192.168.0.1), No.: 1 (dropdown); Activate relay, Name: Relay 1 (192.168.0.1), No.: 1 (dropdown)
- Audio:** Activate audio input, Name: Audio 1 (192.168.0.1), No.: 1 (dropdown)
- Buttons:** OK, Cancel

7. Click Display to confirm that the BRS connects to the AutoDome 700. The BRS displays video from the AutoDome 700 if all settings are correct.

8. Click the Dome Settings tab.
9. Click the `Activate` check box to enable the PTZ control via the BRS. Keep the default settings for the remaining parameters.



10. Click `Close` to accept the changes and to return to the General Settings tab.
11. Click `Ok` to accept all changes. The BRS displays the name for the AutoDome 700 in the device list.