

Issue Severity:

High: Act immediately

Medium: Bosch Security Systems, Inc. strongly recommends you take the action(s) described below.

Low: Advisory

Products Affected:

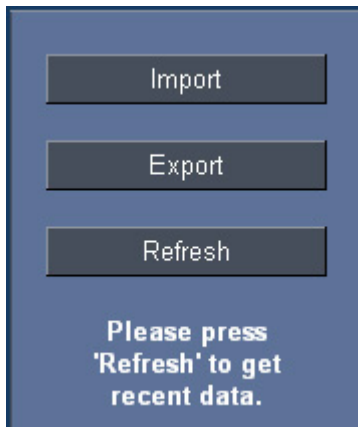
- BIS Security Engine (all versions)
- G-Series Control Panels

1.0 Issue



This issue applies to BIS versions 1.4x and 2.0.

Importing sub-users that do not have a token number or a site code from a G-Series control panel results in deletion of those sub-users from the user database. This occurs when a user selects a control panel in the Admin9000 panel window, then clicks **Import**.



2.0 Resolution

Do not give BIS Security Engine users **Admin9000 import data configuration authorization** rights. Refer to page 2.



During an upgrade from BIS 1.4x to BIS 2.0, all users are automatically imported from the old BIS database to the new BIS database. Clicking the **Import** button is not necessary.



