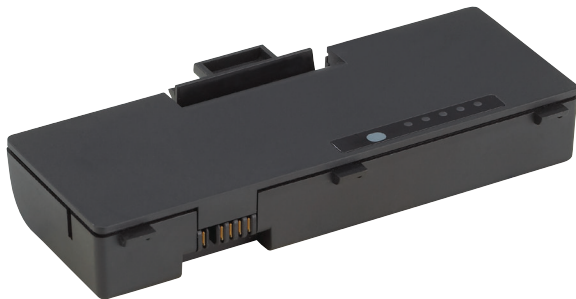


DCN-WLIION-D Battery Pack for Wireless Discussion Units

www.boschsecurity.com



BOSCH
Invented for life



- ▶ Long service life without charge degradation
- ▶ 20 hours typical use from a full charge
- ▶ Fully recharges in 3 hours
- ▶ Built-in microprocessor controls charging cycle
- ▶ Lithium-ion technology

This rechargeable battery is the power source of the wireless discussion units. The battery is a high capacity Lithium-ion type, capable of providing up to 20 hours typical use from a full charge. Fully charging the DCN-WLIION from empty takes just 3 hours. Lithium-ion cells avoid the charge degradation issues associated with other rechargeable battery types. This offers maximum flexibility for scheduling recharges (no requirement to fully discharge batteries before recharging). The 'intelligent' battery has a built-in microprocessor to control charging current and prevent overloading.

Functions

Controls and Indicators

- Charge capacity LEDs and push-to-test button

Interconnections

- Power / charge connector

Certifications and approvals

Region	Certification
Europe	CE

Technical specifications

Electrical

Output Voltage	7.2 VDC
Capacity	4800 mAh

Mechanical

Dimensions (H x W x D)	61.5 x 136 x 22 mm (2.4 x 5.5 x 0.9 in)
Weight	215 g (0.47 lb)
Color	Charcoal (PH 10736)

Ordering information

DCN-WLIION-D Battery Pack for Wireless Discussion Units

charcoal color, lithium-ion, 7.2 VDC, 4800 mAh
Order number **DCN-WLIION-D**

DCN-WCH05 Charger for 5 Battery Packs

charcoal color, re-charge up to 5 DCN-WLIION battery packs
Order number **DCN-WCH05**