



Building Integration System

Selection Guide for re-fitting V2.0 – 3.0



BOSCH

Invented for life

Contents

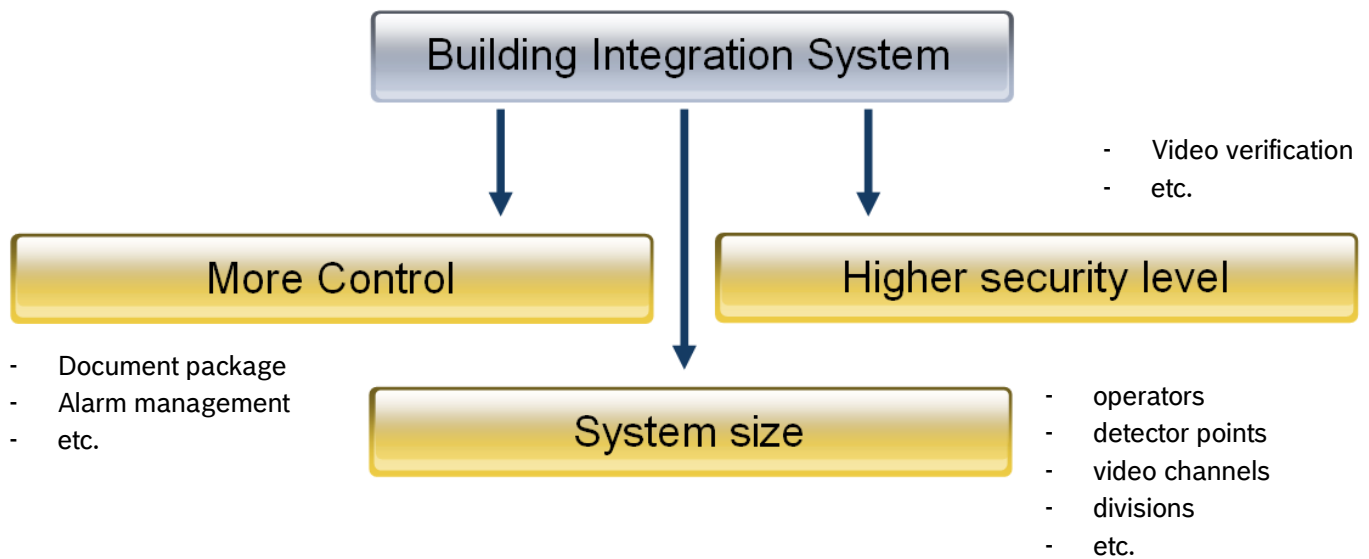
- General.....3**
- Selection Guide – Three steps to your system extension.....5**
 - Step 1: Identify your system’s license number6
 - Step 2: Select the right re-fitting item based on your system’s version7
 - Step 3: Select the options you want to add8
 - Step 3b: Upgrade to newer version8
- Example – Adding common options9**
 - Purchase order9
- Example – Adding an engine and specific options.....9**
 - Purchase order9
- Example – Upgrade to a newer version and adding options10**
 - Purchase order10

General

This document describes the necessary steps when you want to extend or modify an existing BIS system version 2.0 – 3.0. Versions 1.x have a different licensing philosophy which is not described here. If you are interested in a new system, consult our other publication dedicated to new system orders. For all other questions including what to do in cases of a BIS software version prior to 2.0, we encourage you to contact your local Bosch representative. If you want to extend or modify an existing BIS system version 4.0 and higher, follow the Bosch standard process for software licensing via SLMS server (as with BVMS, APE and other Bosch ST software products)

Below is an overview about expanding or modifying your Building Integration System. Examples of options to add or modify are:

- ▶ One or more additional engines
- ▶ Common extensions
- ▶ Engine specific extensions
- ▶ Any combination of the above items



To prevent mismatches when placing an order, the following compatibility list gives you an overview about what options are available with which BIS version.

BIS feature compatibility list

- = not relevant
- x = not supported by version
- = option
- = standard feature

Feature	SAP	CTN	BIS V2.0.x	BIS V2.1.x	BIS V2.1.x Extended	BIS V2.2.x	BIS V2.3.x	BIS V2.4.x	BIS V2.5.x	BIS V3.0.x
BIS Upgrade to Version 3.0 DE	F.01U.274.607	BIS-GEN-UP30DE	○	○	○	○	○	○	○	□
BIS Upgrade to Version 3.0 EN	F.01U.274.608	BIS-GEN-UP30EN	○	○	○	○	○	○	○	□
BIS Upgrade to Version 3.0 NL	F.01U.274.617	BIS-GEN-UP30NL	○	○	○	○	○	○	○	□
BIS Upgrade to Version 3.0 FR	F.01U.274.618	BIS-GEN-UP30FR	○	○	○	○	○	○	○	□
BIS Upgrade to Version 3.0 RU	F.01U.274.619	BIS-GEN-UP30RU	○	○	○	○	○	○	○	□
BIS Upgrade to Version 3.0 HU	F.01U.274.620	BIS-GEN-UP30HU	○	○	○	○	○	○	○	□
BIS Upgrade to Version 3.0 ES	F.01U.274.621	BIS-GEN-UP30ES	○	○	○	○	○	○	○	□
BIS Upgrade to Version 3.0 PT	F.01U.274.622	BIS-GEN-UP30PT	○	○	○	○	○	○	○	□
BIS Upgrade to Version 3.0 CN	F.01U.274.623	BIS-GEN-UP30CN	○	○	○	○	○	○	○	□
BIS Upgrade to Version 3.0 TW	F.01U.274.624	BIS-GEN-UP30TW	○	○	○	○	○	○	○	□
Common features										
Action management	4.998.113.923	BIS-GEN-ACTMGR	○	○	●	●	●	●	●	●
Device overview	4.998.113.921	BIS-GEN-DEVOVER	○	○	●	●	●	●	●	●
Display misc docs	4.998.113.926	BIS-GEN-MISCDOC	○	○	●	●	●	●	●	●
Multi-client system	4.998.113.931	BIS-GEN-SITES	○	○	●	●	●	●	●	●
Alarm document package (bundle)	F.01U.075.230	BIS-GEN-ADPACK	x	x	○	○	○	○	○	○
Display site plans	4.998.113.925	BIS-GEN-SITEMAP	○	○	○	○	○	○	○	○
Graphical navigation	4.998.113.928	BIS-GEN-MAPNAV	○	○	○	○	○	○	○	○
Layer controlling	4.998.113.927	BIS-GEN-LAYER	○	○	○	○	○	○	○	○
Display action plans	4.998.113.924	BIS-GEN-ACTPLAN	○	○	○	○	○	○	○	○
Alarm Management Package (bundle)	F.01U.075.231	BIS-GEN-AMPACK	x	x	○	○	○	○	○	○
Timer	4.998.113.932	BIS-GEN-TIMER	○	○	○	○	○	○	○	○
Operator alarm	4.998.113.929	BIS-GEN-USRALRM	○	○	○	○	○	○	○	○
Message distribution	F.01U.026.285	BIS-GEN-DISTRIB	○	○	○	○	○	○	○	○
Application launcher	F.01U.026.255	BIS-GEN-LAUNCH	○	○	○	○	○	○	○	○
Operator license	4.998.113.934	BIS-GEN-CLIENT	○	○	○	○	○	○	○	○
Add. OPC-Server licence	4.998.149.077	BIS-GEN-OPCLIC	○	○	○	○	○	○	○	○
Additional Division	4.998.127.763	BIS-GEN-ONEDIV	○	○	○	○	○	○	○	○
Nx100 Bosch detector points	4.998.113.935	BIS-GEN-P100	○	○	○	○	○	○	○	○
Nx10000 Bosch detector points	4.998.113.936	BIS-GEN-P1K	○	○	○	○	○	○	○	○
Nx10000 Bosch detector points	4.998.113.937	BIS-GEN-P10K	○	○	○	○	○	○	○	○
Engines and specific features										
AUE Basic package	F.01U.079.189	BIS-AUE-BPA	x	x	x	○	○	○	○	○
AUE basic package EN	F.01U.028.439	BIS-AUE-BPEN	○	○	○	x	x	x	x	x
Nx100 3rd party detector points	4.998.149.080	BIS-AUE-P100	○	○	○	○	○	○	○	○
Nx1.000 3rd party detector points	4.998.149.082	BIS-AUE-P1K	○	○	○	○	○	○	○	○
Nx10.000 3rd party detector points	4.998.149.083	BIS-AUE-P10K	○	○	○	○	○	○	○	○
OPC6600 500 panel upgr.	4.998.149.096	BIS-SEE-AC500	○	○	○	○	○	○	○	○
ACE Basic package	F.01U.079.190	BIS-ACE-BPA	x	x	x	○	○	○	○	○
ACE basic package EN	F.01U.028.588	BIS-ACE-BPEN	○	○	○	x	x	x	x	x
ACE basic package Extended EN	F.01U.075.232	BIS-ACE-BPEXTEN	x	x	○	x	x	x	x	x
Remote door unlock	4.998.127.749	BIS-ACE-REMOPEN	●	●	●	●	●	●	●	●
Route	4.998.127.750	BIS-ACE-ROUTE	●	●	●	●	●	●	●	●
Card Personalization	4.998.127.765	BIS-ACE-IDPRINT	●	●	●	●	●	●	●	●
Access area balancing	4.998.127.746	BIS-ACE-BALANCE	○	○	●	●	●	●	●	●
Access for N persons	4.998.127.747	BIS-ACE-NPERSON	○	○	●	●	●	●	●	●
Mantrap	4.998.127.748	BIS-ACE-MANTRAP	○	○	●	●	●	●	●	●
Guard tour	4.998.127.756	BIS-ACE-GUARD	○	○	●	●	●	●	●	●
Employee drawing	4.998.127.761	BIS-ACE-RANDOM	○	○	●	●	●	●	●	●
Visitor management	4.998.127.760	BIS-ACE-VISITORS	○	○	●	●	●	●	●	●
Interface IDS arm/disarm	4.998.127.766	BIS-ACE-SECSYS	○	○	●	●	●	●	●	●
Elevator interface	4.998.127.767	BIS-ACE-ELEVATR	○	○	●	●	●	●	●	●
Import/Export interface	4.998.127.768	BIS-ACE-IMEXPRT	○	○	●	●	●	●	●	●
Additional 100 employees / ID cards	4.998.127.758	BIS-ACE-100CRDS	○	○	○	○	○	○	○	○
Additional 50 visitors / ID cards	4.998.127.759	BIS-ACE-50VISIT	○	○	○	○	○	○	○	○
Additional 1000 cardholder	F.01U.075.234	BIS-ACE-1000CRD	x	x	○	○	○	○	○	○
Additional 100 visitors	F.01U.075.235	BIS-ACE-100VIS	x	x	○	○	○	○	○	○
32-door-upgrade	F.01U.027.144	BIS-ACE-32DOORS	○	○	○	○	○	○	○	○
Video verification	4.998.127.751	BIS-ACE-VIDVERI	○	○	○	○	○	○	○	○
Parking lot management/controlling	4.998.127.764	BIS-ACE-PARKMGR	○	○	○	○	○	○	○	○
VIE Basic package	F.01U.079.191	BIS-VIE-BPA	x	x	x	○	○	○	○	○
VIE basic package EN	F.01U.028.441	BIS-VIE-BPEN	○	○	○	x	x	x	x	x
VIE Additional one DiBos	F.01U.028.585	BIS-VIE-ADD1DIB	○	○	○	○	x	x	x	x
VIE Additional one Divar	F.01U.028.586	BIS-VIE-ADD1DIV	○	○	○	○	x	x	x	x
VIE Additional one VideoJet	F.01U.028.584	BIS-VIE-ADD1VIP	○	○	○	○	x	x	x	x
VIE Additional Video Channel	F.01U.134.036	BIS-VIE-ADDCHA	x	x	x	x	○	○	○	○
Video Engine Extended Features	F.01U.264.598	BIS-VIE-EXTFEAT	x	x	x	x	x	○	○	○
VIE one 3rdPartyChannel	F.01U.264.599	BIS-VIE-VRECHA	x	x	x	x	x	○	○	○
SEE Basic package	F.01U.079.192	BIS-SEE-BPA	x	x	x	○	○	○	○	○
SEE basic package EN	F.01U.028.587	BIS-SEE-BPEN	○	○	○	x	x	x	x	x
OPC9000 2 panel Upgrade	F.01U.514.469	BIS-SEE-UPPNL2	○	○	○	○	○	○	○	○
OPC9000 8 panel Upgrade	4.998.149.094	BIS-SEE-UPPNL8	○	○	○	○	○	○	○	○
OPC9000 32 panel Upgrade	F.01U.514.470	BIS-SEE-UPPNL32	○	○	○	○	○	○	○	○
OPC6600 500 panel upgr.	4.998.149.096	BIS-SEE-AC500	○	○	○	○	○	○	○	○
Video-Badging for SEE	4.998.149.097	BIS-SEE-PID	○	○	○	○	○	○	○	○
Video Verification for SEE	4.998.149.098	BIS-SEE-VIDVERI	○	○	○	○	○	○	○	○

bundle
single feature
single feature
single feature
single feature
bundle
single feature
single feature
single feature
single feature

same content as ACE BP Ext.

Selection Guide – Three steps to your system extension

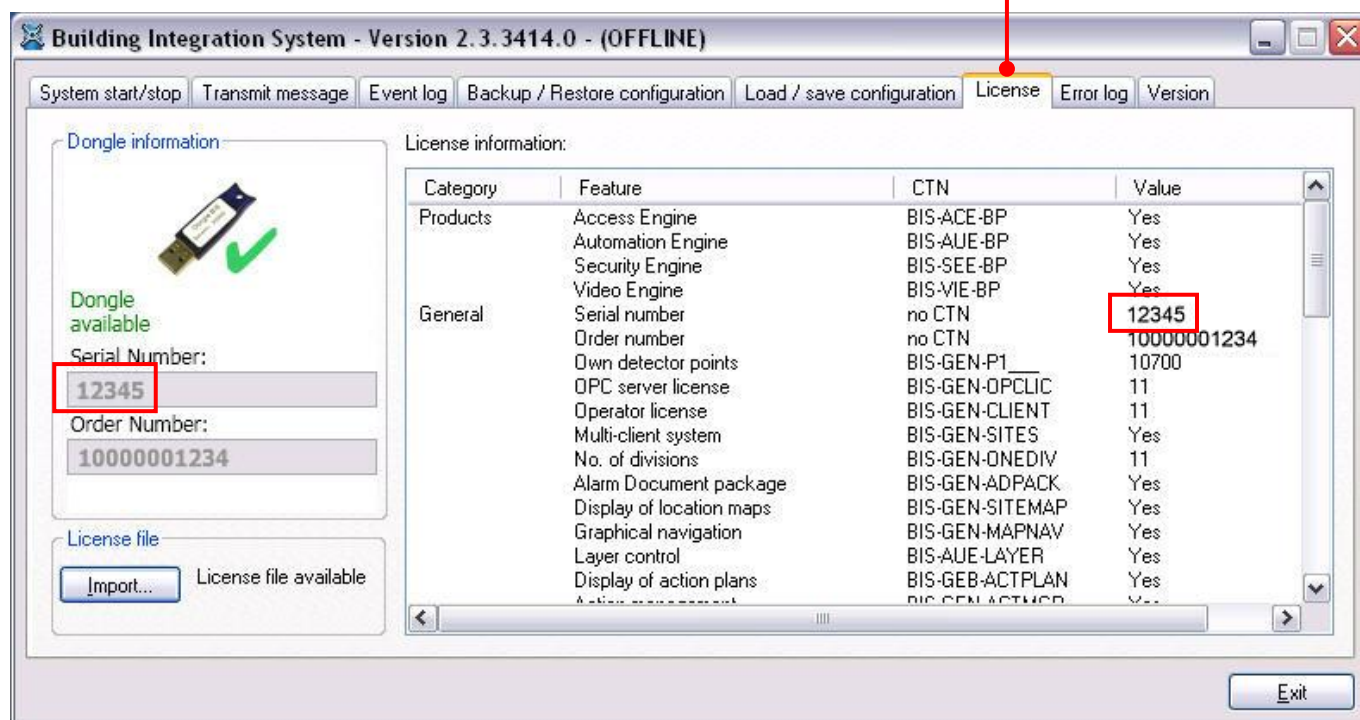
Step 1	Identify your system's license number
	Important to assure that we select the right license file to extend
Step 2	Select the right re-fitting item based on your system's version
	Identifies the license application to use for extending the license file
Step 3	Select the options you want to add
	Select an additional module/engine or from a variety of common and engine-specific options to extend the size of the system or to increase the system's functionality or operating control

Step 1: Identify your system's license number

The system's license number is important to know so that we are able to identify the corresponding license file of your system. The license number is printed on the dongle key's label or on the tab 'License' within the BIS configuration browser as you can see in the examples illustrated below.



Serial / license number on dongle label / license tab



Example view license tab BIS 2.3.x (other versions may differ from layout)

The license number and the original order must be included in your purchase order. An email address for contact, can also be helpful and can potentially speed up the process. This can be done with a short remark like:

“Serial Number: 12345

Original PO: 10000001234

Email: abc@bosch.com”.

Step 2: Select the right re-fitting item based on your system's version

Each dongle along with its corresponding license file enables the features set of a particular system. With the re-fitting item you provide the information necessary to identify which version of the BIS software you are running and what license application we have to use for extending it.

If you are running a then you need and you have to order ... (once per order)
... BIS V2.0.x	BIS Re-fitting features V2.0	BIS-GEN-ADDFEAT
... BIS V2.1.x	BIS Re-fitting features V2.1	BIS-GEN-REFV21
... BIS V2.2.x	BIS Re-fitting features V2.2	BIS-GEN-REFV22
... BIS V2.3.x	BIS Re-fitting features V2.3	BIS-GEN-REFV23
... BIS V2.4.x	BIS Re-fitting features V2.4	BIS-GEN-REFV24
... BIS V2.5.x	BIS Re-fitting features V2.5	BIS-GEN-REFV25
... BIS V3.0.x	BIS Re-fitting features V3.0	BIS-GEN-REFV30
... BIS V4.0.x	the required licenses for V4.0	the required licenses BIS-...-...40

Step 3: Select the options you want to add

In addition to your basic re-fitting item, now add all the options to extend or modify your system. Please follow the compatibility list which is showing what options are available for your BIS version. Following step 3b are examples of feasible re-fitting orders.

Step 3b: Upgrade to newer version

Please note that upgrades to a newer version are handled in the same way as adding options. In the new order, list the corresponding re-fitting item and add the upgrade version desired. We always recommend that you take the latest possible version but first check with your local experts what influence this may have on your system.

Depending on what systems are connected to BIS, you may experience software or hardware mismatches. The following matrix shows you what upgrade paths are possible solely based on the BIS options.

from to	2.0.x	2.1.x	2.2.x	2.3.x	2.4.x	2.5.x	3.0.x
2.0.x	*	*	*	*	*	*	*
2.1.x	EOL	*	*	*	*	*	*
2.2.x	EOL	EOL	*	*	*	*	*
2.3.x	EOL	EOL	EOL	*	*	*	*
2.4.x	EOL	EOL	EOL	EOL	*	*	*
2.5.x	EOL	EOL	EOL	EOL	EOL	*	*
3.0.x	✓	✓	✓	✓	✓	✓	*
4.0.x	✓	✓	✓	✓	✓	✓	✓

Upgrade of an existing BIS 4.0.x can be done via SLMS server and only with a valid Service Maintenance Agreement (SMA).

Example – Adding common options

You are running a BIS V2.2 with Automation Engine monitoring a Bosch fire system, e.g. UEZ2000 or FPA5000. Now you want to add another operator license and 500 additional detector points to monitor because the fire system has been extended. The system's serial number is 12345.

Purchase order

The purchase order must consist of the following items:

Qty.	Description	CTN
1	BIS Re-fitting features V2.4	BIS-GEN-REFV24
1	Operator license	BIS-GEN-CLIENT
5	Nx100 own detector points	BIS-GEN-P100

Serial Number: 12345
Original PO: 10000001234
Email: abc@bosch.com

Example – Adding an engine and specific options

You are running a BIS V2.1 (old 2.1 license, not extended, see also compatibility list) with *Access Engine* monitoring 28 entrances and 1800 cardholders. Now you want to add the *Video Engine* to raise your security level through video surveillance and verification. You want to install eight Bosch VIP-X2 IP video devices each connecting two cameras. Additional six entrances should be controlled and another 500 cardholder licenses are also needed. The system's serial number is 12345.

Purchase order

The purchase order must consist of the following items:

Qty.	Description	CTN
1	BIS Re-fitting features V2.5	BIS-GEN-REFV25
1	VIE basic package	BIS-VIE-BPA
7	VIE Additional one VideoJet (one for free with VIE BP)	BIS-VIE-ADD1VIP
5	Additional 100 employees / ID cards	BIS-ACE-100CRDS
1	32-door-upgrade	BIS-ACE-32DOORS

Serial Number: 12345
Original PO: 10000001234
Email: abc@bosch.com

Example – Upgrade to a newer version and adding options

You are running a BIS V2.1 with Access Engine and Video Engine. You decide to upgrade to the latest BIS version (e.g. BIS V4.0). Additionally you want to integrate a Bosch intrusion panel via the Automation Engine, monitoring about 300 detector points. To increase the control with alarm management and faster response times, you decide to add the display of site maps and alarm documents as well. The system's serial number is 12345.

Purchase order

The purchase order must consist of the following items:

Qty.	Description	CTN
1	BIS Re-fitting features V2.4	BIS-GEN-REFV24
1	BIS Upgrade to Version 4.0	BIS-BUPG-2XTO40
1	AUE Basic package (contains already 500 detector points)	BIS-FAUE-BPA40
1	Alarm document package (contains both kind of alarm documents + 2 other comfort extensions, bundle is cheaper than sum of single items)	BIS-FGEN-AMPK40

Serial Number: 12345

Original PO: 10000001234

Email: abc@bosch.com

This is the end of the guide. If questions that you have are not answered in this guide, we encourage you to visit the Bosch Website and look for additional documents to help you or contact your local Bosch representative.

A Tradition of Quality and Innovation

For over 100 years, the Bosch name has stood for quality and reliability. Bosch is the global supplier of choice for innovative technology, backed by the highest standards for service and support.

Bosch Security Systems proudly offers a wide range of security, safety, communications and sound solutions that are relied upon every day in applications around the world, from government facilities and public venues to businesses, schools and homes.

Bosch Security Systems

To learn more about our product offering, please visit www.boschsecurity.com or send an e-mail to emea.securitysystems@bosch.com

© Bosch Sicherheitssysteme GmbH, 2014
Modifications reserved