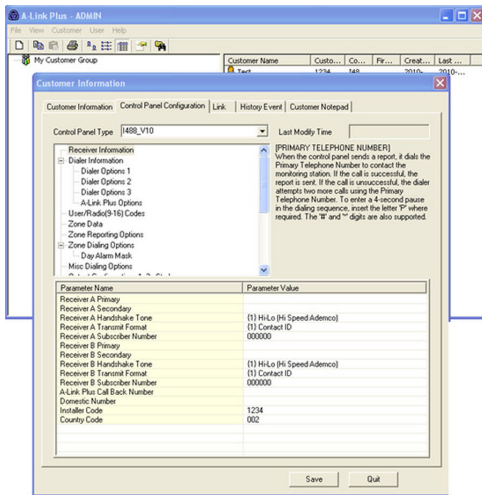


A-Link Plus Remote Programming Software

www.boschsecurity.com



BOSCH
Invented for life



- ▶ View and update compatible Bosch control panel data
- ▶ Send and receive programming data between the A-Link Plus computer and the control panel
- ▶ Remotely arm or disarm the control panel and outputs control
- ▶ View control panel event history
- ▶ Multi-lingual user interface

ITS-ALINK-PLUS software is the remote programming software for compatible Bosch control panels. It provides a flexible and user-friendly interface between a PC and compatible Bosch Security Systems, Inc. (Bosch) control panels. With this software, the Bosch control panels can be programmed remotely through a modem, or directly from the PC using the Direct Link cable. Use this software to manage customer information, program customer control panels, and remotely connect to, and operate, control panels. It is easy to upload and download programming information between the control panel and the PC, obtain a visual representation of current system status, arm or disarm the system, operate various programmable outputs, and obtain reports of control panel data and journal logs. The transfer tool transfers data from older versions of A-LINK software to the ITS-ALINK-PLUS software.

- Can turn various programmable outputs on or off.

Report Capability

The last 40 events in the control panel can be displayed and printed for a hardcopy record.

Three Programmable Security Levels

The system administrator (Administrator Level) can enable or disable certain ITS-ALINK-PLUS software functions for each operator by assigning a required security level to each function and a security level to each operator. Operators can only perform functions for which they have a valid security level. The available security levels are:

- **Administrator Level:** allows full access to all system configurations
- **Operator Level:** allows full access to all system configurations except print and user settings
- **Registrar Level:** allows entry of customer information only

Functions

Remote Operation

Once a valid connection is established between the PC and control panel, operators with appropriate security levels:

- Can arm or disarm the system
- Can turn sirens on or off

Installation/configuration notes

Compatibility Information

The ITS-ALINK-PLUS software supports the following control panels:

- ICP-CMS6-CHI v1.0 (and higher)
- ICP-CMS8-CHI v1.0 (and higher)

- ICP-CMS40-CHI v1.0
- ICP-AMAX-P-EN
- ICP-AMAX-PCB-EN
- ICP-AMAX-P
- ICP-CC404 v1.x
- ICP-CC408 v1.x
- ICP-CC488 v1.x
- Solution 16 (CC880 and SC8016) v2.x and later
- Solution 16 (CC880)(Solution 16 v1.4)
- Solution 844 (CC404 v1.x and CC404 v2.x)
- Solution 862 (CC406 v1.x)
- Solution 880 (CC408 v1.x and CC408 v2.x)
- Solution Ultima 844 (CC484 v1.x)
- Solution Ultima 862 (CC486 v1.x)
- Solution Ultima 880 (CC488 v1.x and CC488 v2.x)

Technical specifications

Minimum System Requirements

CPU:	Intel PIII 1.5 GHz or higher
Operating System:	<ul style="list-style-type: none">• Microsoft Windows XP Professional with Service Pack 1, 2, or 3• Microsoft Windows Vista• Microsoft Windows 7
Hard Drive Free Space:	512 MB
Memory:	256 MB RAM
Mouse:	Windows-compatible mouse
Video:	Standard VGA monitor capable of supporting a resolution of 1024x768 or higher

Trademarks

Trademark names are used throughout this document. In most cases, these designations are claimed as trademarks or registered trademarks in one or more countries by their respective owners. Rather than placing a trademark symbol in every occurrence of a trademark name, Bosch Security Systems, Inc. uses the names only in an editorial fashion and to the benefit of the trademark owner with no intention of infringing the trademark.

Intel is a registered trademark of Intel Corporation in the United States and other countries.

Microsoft, Windows XP, Windows Vista, and Windows 7 are registered trademarks of Microsoft Corporation in the United States and/or other countries.

Ordering information

A-Link Plus Remote Programming Software

Windows-based remote programming software for compatible Bosch control panels

Order number **ITS-ALINK-PLUS**

Represented by:

Americas:

Bosch Security Systems, Inc.
130 Perinton Parkway
Fairport, New York, 14450, USA
Phone: +1 800 289 0096
Fax: +1 585 223 9180
security.sales@us.bosch.com
www.boschsecurity.us

Europe, Middle East, Africa:

Bosch Security Systems B.V.
P.O. Box 80002
5617 BA Eindhoven, The Netherlands
Phone: + 31 40 2577 284
Fax: +31 40 2577 330
emea.securitysystems@bosch.com
www.boschsecurity.com

Asia-Pacific:

Robert Bosch (SEA) Pte Ltd, Security
Systems
11 Bishan Street 21
Singapore 573943
Phone: +65 6571 2808
Fax: +65 6571 2699
apr.securitysystems@bosch.com
www.boschsecurity.asia

China:

Bosch (Shanghai) Security Systems Ltd.
201 Building, No. 333 Fuquan Road
North IBP
Changning District, Shanghai
200335 China
Phone +86 21 22181111
Fax: +86 21 22182398
www.boschsecurity.com.cn

America Latina:

Robert Bosch Ltda Security Systems Division
Via Anhanguera, Km 98
CEP 13065-900
Campinas, Sao Paulo, Brazil
Phone: +55 19 2103 2860
Fax: +55 19 2103 2862
latam.boschsecurity@bosch.com
www.boschsecurity.com