

# Important Safety Instructions

**Type numbers:** NWC-0700, NWC-0800, NWC-0900

Read, follow, and retain all of the following safety instructions. Heed all warnings on the unit and in the operating instructions.

1. Clean only with a dry cloth. Do not use liquid cleaners or aerosol cleaners.
2. Do not install unit near any heat sources such as radiators, heaters, stoves, or other equipment (including amplifiers) that produce heat.
3. Do not block any ventilation openings.
4. Do not use the unit near water or expose to rain or moisture. Never spill liquid of any kind on the unit.
5. Unplug the unit during lightning storms or when unused for long periods.
6. Adjust only those controls specified in the operating instructions.
7. Do not overload outlets and extension cords, as this can cause fire or electrical shock.
8. Protect the plug and power cord from foot traffic or pinching, at electrical outlets, and at its exit from the unit.
9. Operate the unit only from the type of power source indicated on the label.
10. Unless qualified, do not attempt to service a damaged unit yourself. Refer all servicing to qualified service personnel.
11. Use only replacement parts specified by the manufacturer.
12. Install in accordance with the manufacturer's instructions in accordance with applicable local codes.
13. Use only attachments/accessories specified by the manufacturer. Equipment change or modification could void the user's guarantee or authorization agreement.



**DANGER!** High risk:

This symbol indicates an imminently hazardous situation such as "Dangerous Voltage" inside the product.

If not avoided, this will result in an electrical shock, serious bodily injury, or death.



**WARNING!** Medium risk:

Indicates a potentially hazardous situation.

If not avoided, this could result in serious bodily injury or death.



**CAUTION!**

Indicates a potentially hazardous situation. If not avoided, this may result in minor or moderate injury. Alerts the user to important instructions accompanying the unit.

**CAUTION!**

Indicates a potentially hazardous situation. If not avoided, this may result in property damage or risk of damage to the unit.

**NOTICE!**

This symbol indicates information or a company policy that relates directly or indirectly to the safety of personnel or protection of property.

**CAUTION!**

- U.S.A. models only - *Section 810* of the *National Electrical Code, ANSI/NFPA No. 70*, provides information regarding proper grounding of the mount and supporting structure, location of discharge unit, connection to ground electrodes, and requirements for the grounding electrode.
  - Power lines: do not locate the camera near overhead power lines, power circuits, electrical lights, or where it may contact such power lines, circuits, or lights.
  - Operate the unit only from the type of power source indicated on the label. Before proceeding, be sure to disconnect the power from the cable to be installed into the unit.
    - For external power supplied units, use only the recommended or approved power supplies.
    - For limited power source units, this power source must comply with *EN60950*. Substitutions may damage the unit or cause fire or shock.
    - For 9-12 VDC units, voltage applied to the unit's power input should not exceed 12.3 VDC. User-supplied wiring must comply with local electrical codes (Class 2 power levels). Do not ground the supply at the terminals or at the unit's power supply terminals.
- If unsure of the type of power supply to use, contact your dealer or local power company.



**NOTICE!** You can view and print the full version of this Installation Manual with Adobe Acrobat Reader, both provided on the enclosed CD-ROM. This user guide is the intellectual property of Bosch Security Systems; protected by copyright.

## FCC & ICES INFORMATION

(U.S.A. and Canadian Models Only)

This device complies with *part 15* of the *FCC Rules*. Operation is subject to the following conditions:

- this device may not cause harmful interference, and
- this device must accept any interference received, including interference that may cause undesired operation.

---

### NOTICE!

This equipment has been tested and found to comply with the limits for a **Class A** digital device, pursuant to *Part 15* of the *FCC Rules* and *ICES-003* of *Industry Canada*. These limits are designed to provide reasonable protection against harmful interference when the equipment is operated in a commercial environment. This equipment generates, uses, and radiates radio frequency energy and, if not installed and used in accordance with the instruction manual, may cause harmful interference to radio communications. Operation of this equipment in a residential area is likely to cause harmful interference, in which case the user will be required to correct the interference at his expense.



Intentional or unintentional modifications, not expressly approved by the party responsible for compliance, shall not be made. Any such modifications could void the user's authority to operate the equipment. If necessary, the user should consult the dealer or an experienced radio/television technician for corrective action.

---

The user may find the following booklet, prepared by the Federal Communications Commission, helpful: [How to Identify and Resolve Radio-TV Interference Problems](#). This booklet is available from the U.S. Government Printing Office, Washington, DC 20402, Stock No. 004-000-00345-4.

### WARNING!

This is a class A product. In a domestic environment this product may cause radio interference, in which case the user may be required to take adequate measures.

# 1 Quick Install Guide

## 1.1 Camera installation using PoE switch

Equipment needed:

- PC with 100baseT or better network port
- 100 baseT or better network switch with PoE capability
- 2 CAT5 Network cables



### **CAUTION!**

Never supply power via the Ethernet connection (PoE) when power is already supplied via the power connector.

1. Attach camera to a PoE port of the network switch with CAT5 cable.
2. Attach (non-PoE) switch port to the PC LAN port with CAT5 cable.
3. Manual iris lens: Check the lens to make sure the F-Stop is between F2.8 and F4.0.
4. DC-iris lens: Ensure that the DC-iris cable is plugged into the iris connector on the rear of the camera.
5. Plug in the switch's power cord.
6. A yellow LED on the back of the camera should light up after a few seconds.
  - This LED indicates that a link to the computer has been established.
  - A green LED will blink when the camera is accessed.

## 1.2 Camera installation with direct connection to PC

Equipment needed:

- PC with 100baseT or better network port
- 1 CAT5 cross-linked network cable
- Power supply unit: 9-12 VDC, 500 mA.



### **CAUTION!**

For 9-12 VDC units, voltage applied to the unit's power input should not exceed 12.3 VDC.

1. Attach camera to the 100 Mbps network input of the PC with the cross-link CAT 5 cable.
2. Manual iris lens: check the lens to make sure the F-Stop is between F2.8 and F4.0.
3. DC-iris lens: plug in the DC-iris cable into the iris connector on the rear of the camera.
4. Plug in the camera power cord.
5. A yellow LED on the back of the camera should light up after a few seconds.
  - This LED indicates that a link to the computer has been established.
  - A green LED will blink when the camera is accessed.

## 1.3 Setting camera IP address

The camera is supplied with installation software on CD. The installation software assists setting up the camera's IP address. To run the installation software:

1. Make sure your Windows XP/2K account has administrative privileges.
2. Using Windows Explorer, navigate to the CD and double click the installer.exe file. The camera installer program opens.

### 1.3.1 Configure firewall

As you start the application, your PC may prompt you to permit its access to the network.

Allow the Camera Installer program to access the network.

### 1.3.2 Assigning IP addresses

Choosing between Basic or Advanced modes:

- Only use Basic mode (default) if the network does not have other devices connected.
- Use Advanced mode if the network has other devices connected (this is because using Automatic mode risks duplicating existing IP addresses).

**Basic mode**

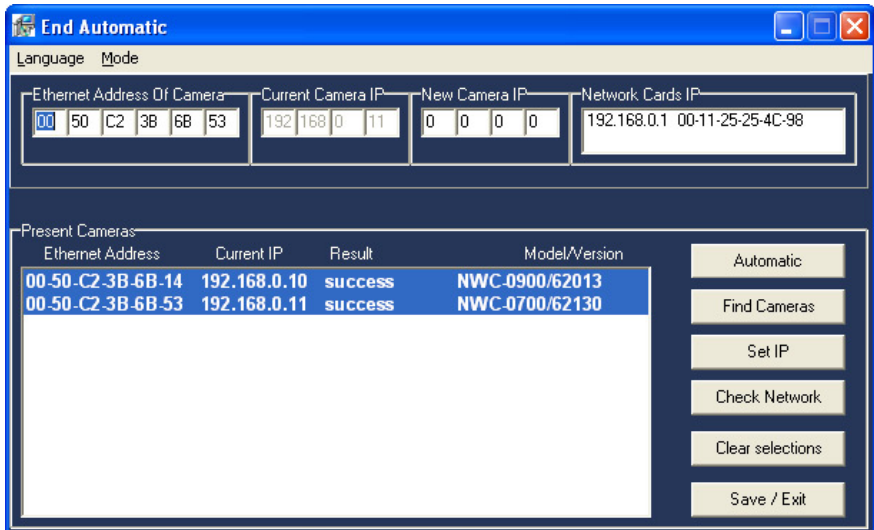
1. Click Automatic. The install program will scan the network for all connected MegaPixel cameras and assign an IP address automatically within the network segment of the host PC.

When all the connected cameras show 'Success' in the Results column, the installation process is complete.

2. Write down the (MAC) Ethernet address, corresponding IP address, and installed location.
3. Click Save / Exit when done.



**Fig. 1.1** Camera installation in basic mode showing results



**Fig. 1.2** Camera installation in advanced mode showing results

### Advanced mode

1. Start making a list of Ethernet (MAC) addresses and IP addresses assigned to them. The Ethernet address is on the camera label.
2. Click Find Cameras.
3. Select a camera by clicking its Ethernet address.
4. Enter the IP address assigned to that camera in the New Camera IP box.
5. Click Set IP.
6. Click Automatic.
7. Wait for result to change from unchecked to success.
8. Click Save / Exit when done.

### Viewing the image

1. Open Internet Explorer.
2. In the address line, enter `http://IPADDRESS/index.html`.
3. Click Video to display the image.
4. Adjust the lens for optimal focus.

### **NOTICE!** Adjust back focus if necessary.

- a. Loosen the set screws in the top and bottom of the front panel (use 1/16 inch hex key).

- b. Rotate lens in or out with back focus ring until focus is obtained.
- c. Fasten the two set screws.