

# Easy Series

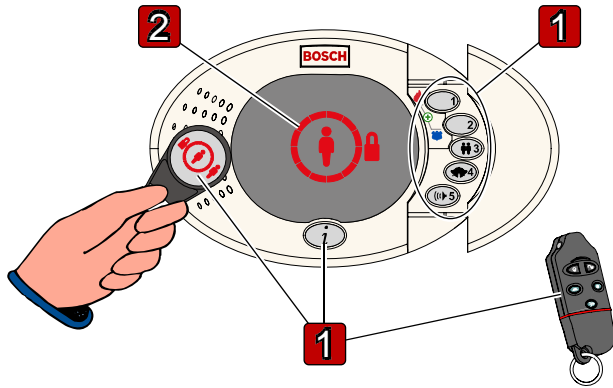


EN | User's Guide  
Intrusion Control Panel



**BOSCH**

## Using the Control Center



### 1 Turning the System On or Off

Select an option from the table below to turn your system on or off.

Wait for the icon on the control center to turn red and for Exit Delay to start before you leave the building.

Option	Description
	Present token. Follow control center instructions.
	Press [i] button. Follow control center instructions.
	Enter passcode. Follow control center instructions.
	Press  to turn the system on (unoccupied). Press  to turn the system off. Refer to <i>Key Fob Button Configuration</i> on page 4 for more key fob options.

### Invalid Passcode Entry Limit

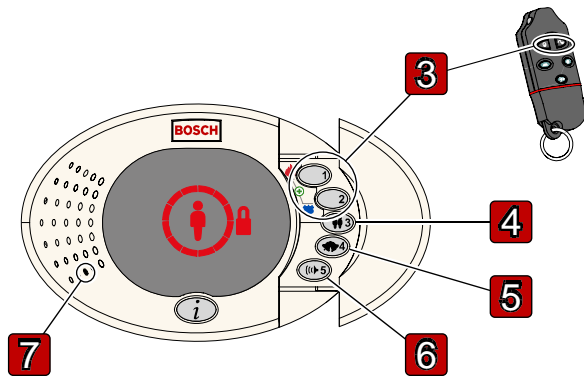
You have 3 attempts\* to correctly enter a passcode before the system locks out the control center for 3 minutes\*.

\*Your alarm company representative sets these values.

## 2 Display States

Display	Description
	The system is off. No alarm or trouble conditions exist. You can turn the system on.
	The system is on (occupied).
	The system is on (unoccupied).
	Fire or intrusion alarm occurs when the system is:
	OFF
	ON (occupied)
	ON (unoccupied)
	Exit Delay in progress (system on occupied or unoccupied). The control center announces the time remaining at designated intervals. Circle segments turn on one at a time to provide a visual status of Exit Delay status. During the last 10 sec, it sounds a quick beep before the system turns on. You have <u>60</u> sec* to exit the building before an alarm occurs.
	Entry Delay (system on occupied or unoccupied). The control center sounds a quick beep during Entry Delay. Circle segments turn off one at a time to provide a visual status of Entry Delay status. An alarm occurs if you do not turn the system off in the designated time. <b>Amber display:</b> First half of Entry Delay <b>Red display:</b> Second half of Entry Delay You have <u>30</u> sec* to turn the system off before an alarm occurs.
	There is a system problem. Follow all control center instructions.
	One or more points are faulted. Follow all control center instructions.
	Too many faulted points.
	Control center test. Icons alternately flash. The control center sounds a quick double beep five min before the end of the test.

\* Your alarm company sets these time entries.



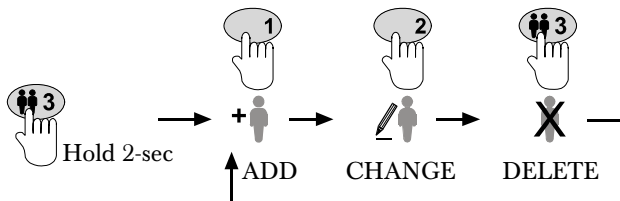
### 3 Emergency Buttons

Your alarm company must activate these buttons in the system before you can use them.

Press and hold the appropriate emergency button for two sec to start an alarm.

Alarm	Icon	Button(s) to Hold	Alarm Cadence	Enabled?
Fire			Pulsing	<input type="checkbox"/>
Panic			Steady	<input type="checkbox"/>
Emergency			None	<input type="checkbox"/>
Key Fob Panic	None		None	<input type="checkbox"/>

### 4 Adding or Changing Users, Tokens, and Key Fobs



This system supports up to 22 users:

- **User 1:** Master user. Default passcode is 1234(55)\*.
- **Users 2 to 21:** System users.
- **User 22:** Duress user. The system sends a Duress report when the Duress user's passcode is used to turn the system off. You cannot assign a token or key fob to the Duress user. Your alarm company must enable the Duress user.

\* The length for all passcodes can be four or six digits depending on system programming.

Follow all control center instructions.

Refer to page 5 for a complete list of User Menu options.

### User Authority

Function	Master User	Users 2 to 21
Turn the system on or off	√	√
Start a two-way voice session <sup>1</sup>	√	√
Access the System Maintenance Menu <sup>1</sup>	√	√
Change own passcode	√	√
Access the User Menu <sup>2</sup>	√	

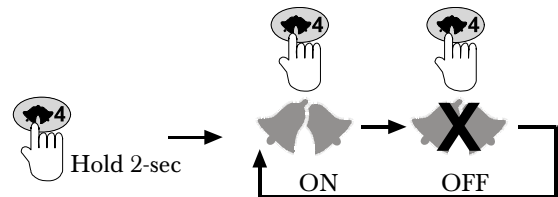
<sup>1</sup> Refer to the *Phone Menu* on page 5 for more information.

<sup>2</sup> Only the Master User can access the full User Menu. Users 2 to 21 can change only their own passcode. Refer to the *Phone Menu* on page 5 for more information.

### 5 Chime Mode

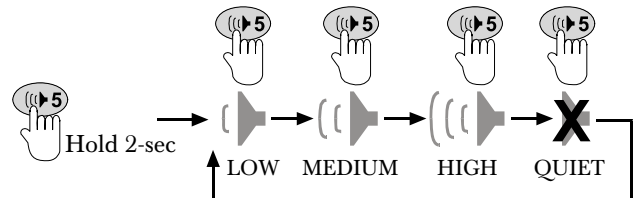
If Chime Mode is on, the control center sounds a tone whenever a perimeter point is faulted and the system is off.

To turn Chime Mode on or off:



### 6 Volume Adjust

To adjust the volume of the control center:



**Quiet Control Center:** Exit Delay and Entry Delay tones are silenced.

### 7 Audio Interface

Speak into this area to talk to someone on the telephone during a two-way voice session.

## Starting a Phone Session

You can perform several functions with your security system from the house phone or from an outside phone.

Refer to the *Phone Menu* on page 5 for available options.

### House Phone

Press [#] three times. The system disconnects the outside phone line and asks you for a passcode.

### Outside Phone

1. Call the premises phone number.
2. If the call is answered by either a person or a telephone answering device, press [\*] three times to disconnect the answering party and access the system.
3. Enter your passcode when prompted.

If the phone is not answered by a person or telephone answering device, the system answers after a programmed number of rings.

## Enable Installer Access (Master User only)

- My system supports this feature.

Use this option to grant system access to an alarm company representative.

### From the Control Center

Enter the Master User passcode and wait until the system times out (control center display stops flashing).

If using the Master User token, present the token several times until the system announces "Turning the system off."

### From the Phone Menu

1. From the Phone Menu, press [3] to select System Maintenance.
2. Press [3] to select System Test Menu.
3. Press [6] to enable installer access.



### Disable Installer Access

To disable installer access to the system, turn the system on.

## Using the Key Fob

### Key Fob Button Configuration (Optional)





Your alarm company representative must complete the table below. Select only one option for each button.

Button Options	Button Assignments	
		
System Status (Default)	<input type="checkbox"/>	<input type="checkbox"/>
Turn System On (Occupied)	<input type="checkbox"/>	<input type="checkbox"/>
Turn System On (Custom)	<input type="checkbox"/>	<input type="checkbox"/>
Turn Output On or Off	<input type="checkbox"/>	<input type="checkbox"/>
Turn Output On for Two Seconds	<input type="checkbox"/>	<input type="checkbox"/>

### Silent Panic Operation

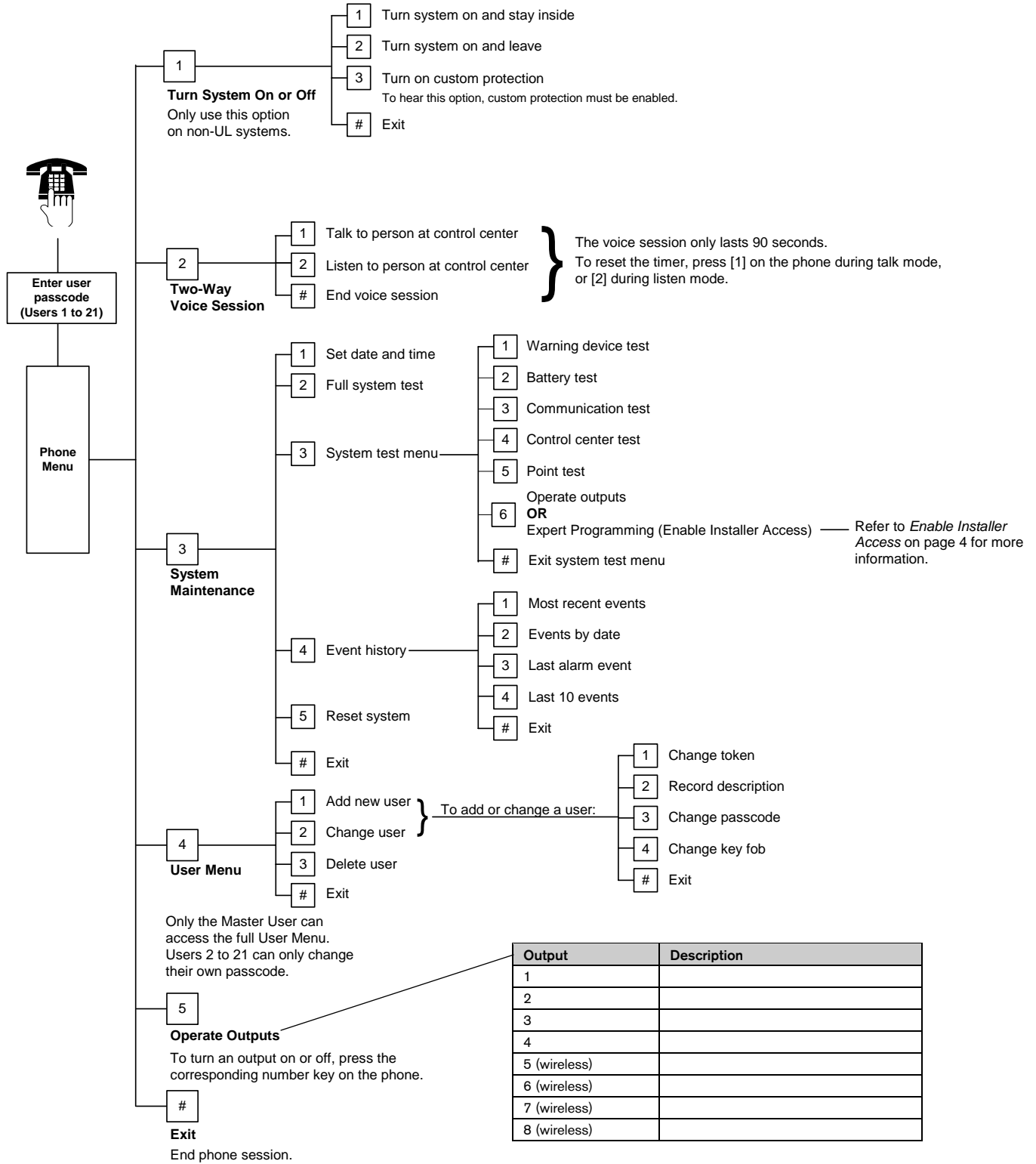
- My system sends a Silent Key Fob Panic report.

### Key Fob LED Status

Status	Description
Alternating red and green	A key fob button was pressed. The LED either stops flashing, or one of the other status indicators in this table occurs.
Red fast flash	The system is in alarm, or silent panic feature was used.
Red slow flash	Exit delay in progress (system occupied or unoccupied).
Red on steady	The system is on (occupied or unoccupied).
Green fast flash	An error occurs while turning the system on. The system does not turn on as expected.
Green slow flash	The system is not ready to turn on. A button programmed for system status also shows this status.
Green on steady	The system is off and is ready to turn on. The button programmed for system status also shows this status.
Red on steady and slow green flash	Either  or  was pressed to turn an output on continuously, or turn it on for two seconds.
Green on steady and slow red flash	Either  or  was pressed to turn an output off.


# Phone Menu

Before you can access the Phone Menu, you must start a phone session. Refer to page 4 for instructions.




## Silencing an Alarm

If an alarm occurs, the system waits 30 sec before sending the alarm report to the central station. Your alarm company can adjust the delay time.

To abort the alarm during this delay time, present your token, enter your passcode, or press  on the key fob. The alarm is silenced.

You have 30 sec\* to abort an alarm.

If an alarm occurs and the system sends the Alarm report when the delay time ends, present your token, enter your passcode, or press  on the key fob to send an Alarm Cancel report. The alarm is silenced.

You have 5 min\* to send an Alarm Cancel report.

\* Your alarm company sets these time entries.

## Alarm and Trouble Events

Your system can send up to 3 alarm or trouble events until you turn off the system or reset it.

Your alarm company sets this value.

## User Passcode and Point Descriptions

### User Passcodes

User 0 = Installer

User	Passcode	Description	User	Passcode	Description
1 (Master)			12		
2			13		
3			14		
4			15		
5			16		
6			17		
7			18		
8			19		
9			20		
10			21		
11			22 (Duress)		

### Points

Point 0 = on-board tamper switch input

Point Number	Description	Point Number	Description
1		17	
2		18	
3		19	
4		20	
5		21	
6		22	
7		23	
8		24	
9		25	
10		26	
11		27	
12		28	
13		29	
14		30	
15		31	
16		32	

## System Information

### Phone Line Seizure



Your security system includes a telephone line seizure feature. Your alarm company can program your system to send reports over the phone line to the central station. You cannot use your phone when the system is sending reports to the central station.

If the central station cannot receive reports, your phone service might be unavailable for up to 20 minutes as the system tries to contact the central station.

If your phone service is interrupted, your security system cannot send reports to the central station unless it has another way of sending them.

### Limitations

Not even the most advanced security system can guarantee coverage against burglary, fire, or environmental threats. All security systems are subject to possible compromise or failure-to-warn for a variety of reasons including, but not limited to, the following:

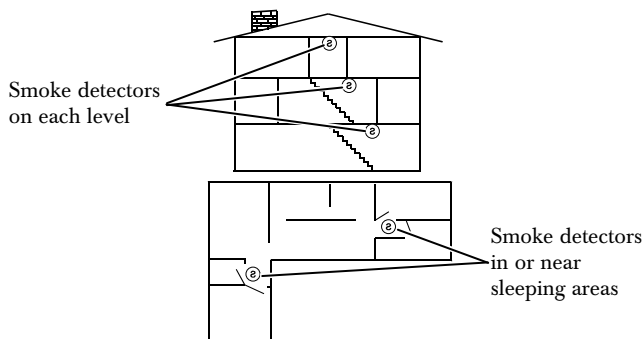
- If sirens or horns are placed outside the hearing range of people in remote areas of the building or in areas that are frequently closed, they do not provide the intended protection.
- If intruders gain access through unprotected points of entry, the system cannot detect their entrance.
- If intruders have the technical means of bypassing or disconnecting all or part of the system, they cannot be detected.
- If the AC power supply is off and the standby battery is either missing or dead, detectors cannot detect intrusion.
- Smoke detectors cannot detect smoke in chimneys, walls, or roofs, or smoke blocked by a closed door. They cannot detect smoke or fire on a level of the building different from the one on which they are located. Smoke detectors might not be able to warn in time about fires started by explosions, improper storage of flammables, overloaded electrical circuits, or other types of hazardous conditions.
- If phone lines are out of service, reports from the security system to the central station cannot be sent. Phone lines are vulnerable to compromise by several means.
- Inadequate maintenance and failure to test are the most common causes of alarm failure. To ensure that all system components work correctly, test your system regularly, and have it inspected according to local code or law.

Although having a security system can make you eligible for reduced insurance premiums, the system is no substitute for insurance. Warning devices cannot compensate you for loss of life or property.

## Fire Safety and Evacuation

Residential fire is a leading cause of accidental death. Most fire related deaths occur at night when occupants suffocate in their sleep from smoke and toxic gases, rather than from burns. To help reduce this risk, use the following guidelines:

- Minimize fire hazards. Smoking in bed, cleaning with flammable liquids such as gasoline, leaving children home alone, and using unsafe holiday decorations are some of the common causes of household fire.
- Install a fire alarm system. The primary purpose of this system is to alert people by giving the earliest possible warning of danger.
- Install smoke detectors in all locations as identified by local code or law.



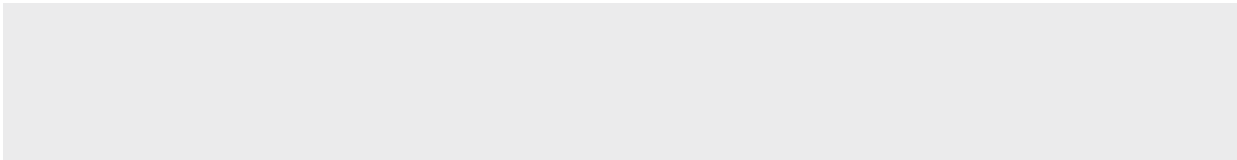
- Practice an escape plan. Because there might be very little time between detection of a fire and the time it becomes deadly, every family member must understand how to quickly evacuate according to the plan.
- Have a primary and alternate escape route. Because stairwells and hallways could be blocked during a fire, exiting through a bedroom window must be part of the escape plan. If the sleeping area is above the ground floor, install a means of safely descending outside the building if one does not already exist.
- Arrange to meet at a location away from the house, such as a neighbor's house, so you know that everyone is accounted for.
- If the alarm was accidentally sounded, silence the bell, reset the detectors, and immediately notify your alarm company that there is no emergency situation.

### EN50131 Compliance

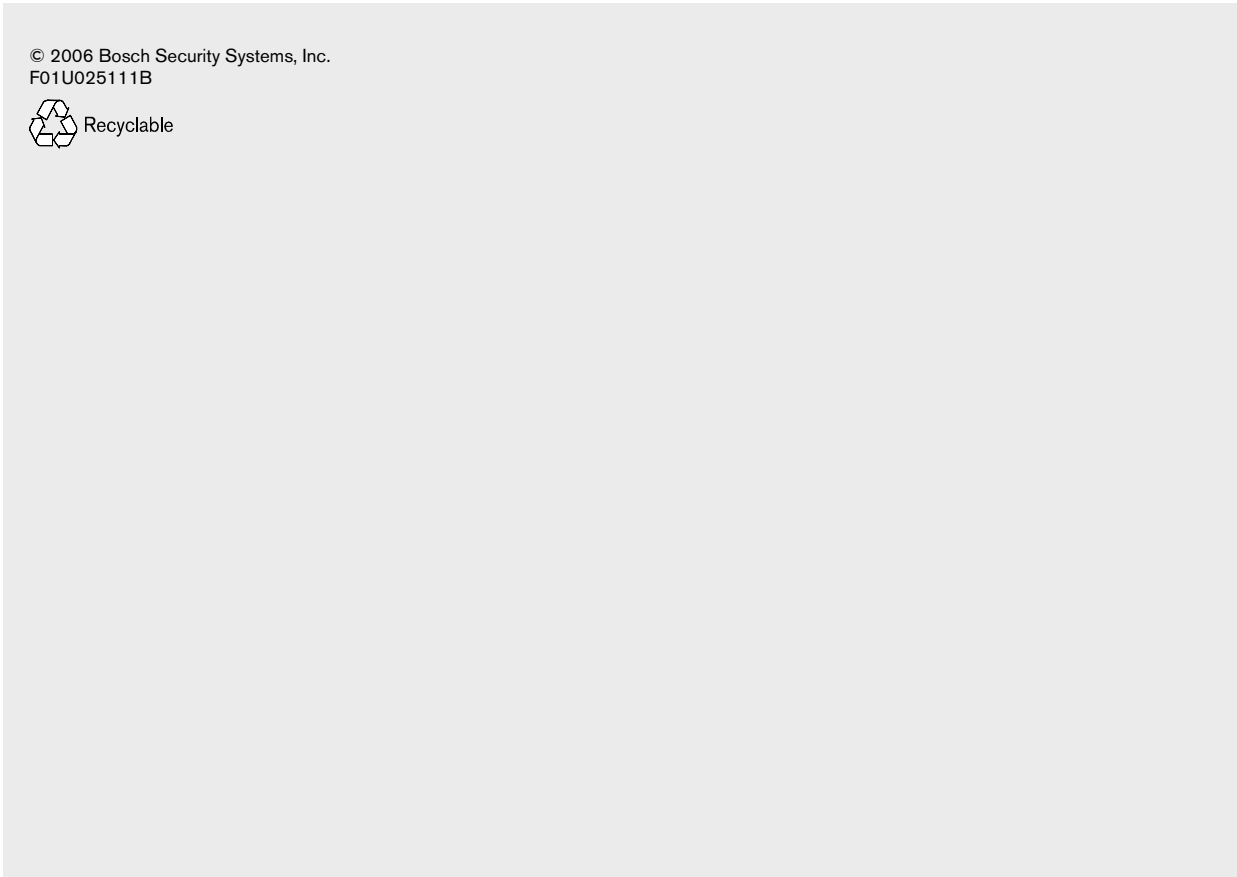
EN50131-1 Security Grade 2, Environmental Class II

Logical Key	Number of Unique Combinations
Six-digit Passcode*	15,625
Token	42,000,000,000
Key Fob	2,800,000,000,000,000

\* Only Numbers 1 to 5 are allowed



For technical support, please contact:



© 2006 Bosch Security Systems, Inc.  
F01U025111B

