

VIDOS IntuiKey

Installation and Operating Manual



BOSCH

Invented for life



Copyright

This document is the intellectual property of Bosch Security Systems and is protected by copyright. All rights reserved. No part of this document may be reproduced or transmitted for any purpose, by whatever means, electronic or mechanical, without the express written permission of Bosch Security Systems.

Release: September 2005 (corresponding to VIDOS Software version 3.0)

© Copyright 2005 Bosch Security Systems

Note

This document has been compiled with great care and the information it contains has been thoroughly verified. The text was complete and correct at the time of printing. The ongoing development of the products may mean that the content of the document can change without notice. Bosch Security Systems accepts no liability for damage resulting directly or indirectly from faults, incompleteness or discrepancies between the document and the product described.

Trademarks

All hardware and software product names used in this document are likely to be registered trademarks and must be treated accordingly.

Contents

Chapter 1	Introduction	3
	About this manual	3
	VIDOS IntuiKey	4
	The control panel	5
Chapter 2	Installation and Setup	7
	Installation	8
	VIDOS IntuiKey in use	11
	Preparatory work in VIDOS	12
Chapter 3	Monitoring with VIDOS IntuiKey	19
	Login	19
	Entries with the keyboard	21
	Additional actions	27
Chapter 4	Contacts and Service (Address)	29
	Contact address	29
	Service and support	30
	Index	31

1

Introduction

About this manual

This manual is intended for persons responsible for setting up and using the BOSCH IntuiKey digital control panel for use with VIDOS. In the following it therefore is referred to as VIDOS IntuiKey in order to point out that all information is limited to the work carried out in association with VIDOS. This manual describes the setup and operation of the VIDOS IntuiKey control panel.

In addition, you should refer to the general documentation supplied with the control panel and the safety instructions it contains.

Conventions in this manual

The following symbols and notations highlight important situations and information:



Warning!

Safety instructions where non-compliance can result in damage to the unit are marked with this symbol.



Note

This symbol indicates special features and provides tips and information for easier, more convenient use of the software.

Terms that you can find in the program, e.g. menu options or commands, are written in **bold**.

References to other documents or other points in this document are written in SMALL CAPITALS.

If you have any questions about the programs from the VIDOS Pro Suite, you can find further information on the Internet at:

www.vidos.net

There, you will also find information about new releases or manual versions. You can also submit your suggestions and comments relating to this document so that these can be taken into account for future editions.

VIDOS IntuiKey

The VIDOS video management system allows integration of the BOSCH IntuiKey digital control panel. Within a VIDOS system, the user can thus control installed cameras, connect cameras and salvos to monitors, navigate between site maps and trigger other actions he is permitted to perform. Knowledge of VIDOS or any other programs is not required. Only the individually designed work area needs to be documented for the user.

The software enabling control using VIDOS IntuiKey is automatically installed along with VIDOS. For details of integration into VIDOS and setting up the work area, refer to the following additional documentation:

BOSCH IntuiKey	General documentation for control panel
VIDOS	Describes the basic setup of a the system, e.g. integration of cameras and hardware monitors, setting up salvos and planning recordings.
Site maps	Describes the creation of site maps in VIDOS.
Alarm management	Describes alarm management in VIDOS, e.g. creating triggers and alarm scenarios.
Camera documentation	You obtain separate documentation for each camera from the manufacturer.
VideoJet, VIP, etc.	You obtain documentation for each device from Bosch. This explains the typical device settings.

This document is divided into two sections:

INSTALLATION AND SETUP

and

MONITORING WITH VIDOS INTUIKEY.

As the administrator of a VIDOS system, starting on page 7 all information is provided that you will need to set up a VIDOS work area in such a way that it can be used with the BOSCH IntuiKey digital control panel.

As a user, starting on page 19 you will find all the necessary information to use the control panel.

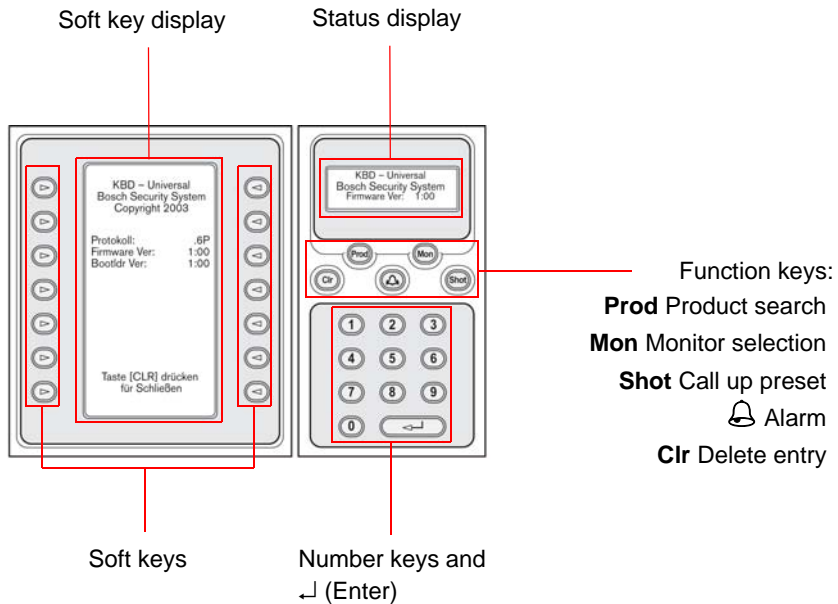
The control panel



Warning!

Make sure that the BOSCH IntuiKey digital control panel you are using has at least firmware version 1.60. Control panels with older firmware versions cannot be used in conjunction with VIDOS.

This documentation refers to keys and displays on the control panel. Here is a brief overview of the control panel:



Next to the status display, you will find the joystick for panning, tilting and zooming, as well as keys for setting the focus and iris on the active camera.

2

Installation and Setup

This section is aimed at the administrator of a VIDOS system. It describes the setup of a VIDOS workstation operated using the digital control panel.

Once the workstation has been set up, the user typically has no access to a mouse or PC keyboard. The VIDOS user interface is not part of the work area for monitoring personnel. As an administrator, your task is to design the work area for the monitoring personnel in such a way that VIDOS IntuiKey can be used to perform all operations that are necessary for monitoring.

To do this, you need to familiarize yourself with control using the control panel. This is the only way that you will be able to create an appropriate work area for the user. Refer to the description starting on page 19 of this document.

Requirements for setting up a VIDOS IntuiKey workstation:

- You have administrator privileges for VIDOS.
- You are familiar with the VIDOS program and have already created the items to be operated using VIDOS IntuiKey in VIDOS, e.g. cameras, salvos, monitors or site maps.

For detailed information about VIDOS refer to the separate documentation VIDOS or the ONLINE HELP for VIDOS.

Installation

Below, you will find a brief overview of the installation and connection of the control panel. For complete information, refer to the **DEVICE DOCUMENTATION FOR THE BOSCH INTUIKEY CONTROL PANEL**.

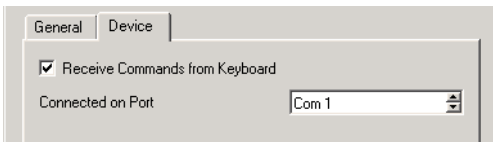
Purchasing and entering a license

In order to be able to use the BOSCH IntuiKey digital control panel in conjunction with VIDOS, you must purchase the corresponding license. Once you have obtained the activation code for BOSCH IntuiKey and entered this in the License Viewer, you can add the control panel to the VIDOS system as a new device. For detailed information about licensing, refer to the **QUICK INSTALLATION GUIDE** supplied with the VIDOS Pro Suite product CD.

Integrating the control panel into VIDOS

For detailed information about integrating the control panel into the VIDOS system, refer to the user guide for VIDOS in the section entitled **INTEGRATING THE BOSCH INTUIKEY DIGITAL CONTROL PANEL**, here is a brief summary:

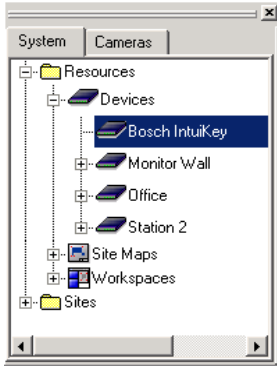
1. Start the VIDOS program.
2. Click on **System > Configuration....**
You will see the **Configuration** window.
3. Right click on **Devices** and select **New**.
You will see the **Select object** selection dialog.
4. In this dialog box, select **Bosch IntuiKey**.
5. Click on **OK**.
You will see the **General** tab in the **Create new Bosch IntuiKey** dialog box.
6. Give the device a descriptive name and if necessary enter a description.
7. Click on the **Device** tab.
8. Enable the device by checking the field in front of **Receive Commands from Keyboard**.



9. Select the COM port used to connect the control panel to the PC.

10. Click on **OK**.

The control panel is integrated into the system and is displayed in the VIDOS system tree under **Devices**.



Connecting and starting the control panel



Warning!

Make sure that the BOSCH IntuiKey digital control panel you are using has at least firmware version 1.60. Control panels with older firmware versions cannot be used in conjunction with VIDOS.

1. Connect a COM port on the PC on which VIDOS is installed to the RS232 serial port on the rear of the control panel using the appropriate cable.



Note

Use a fully occupied serial cable (9-wire) for the connection.

2. Make sure that the power supply unit provided is used to power the control panel.
As soon as the power supply is connected, the control panel is active.
3. Make sure that VIDOS is started on the PC.
4. Press the **Prod** key on the control panel.
The control panel starts the search for products with which it can communicate. VIDOS is found.
In the top left of the soft key display on the control panel, you will find the option **Terminal**.
5. Press the **Terminal** soft key to use the control panel in conjunction with VIDOS.
The main menu will then appear in the soft key display.



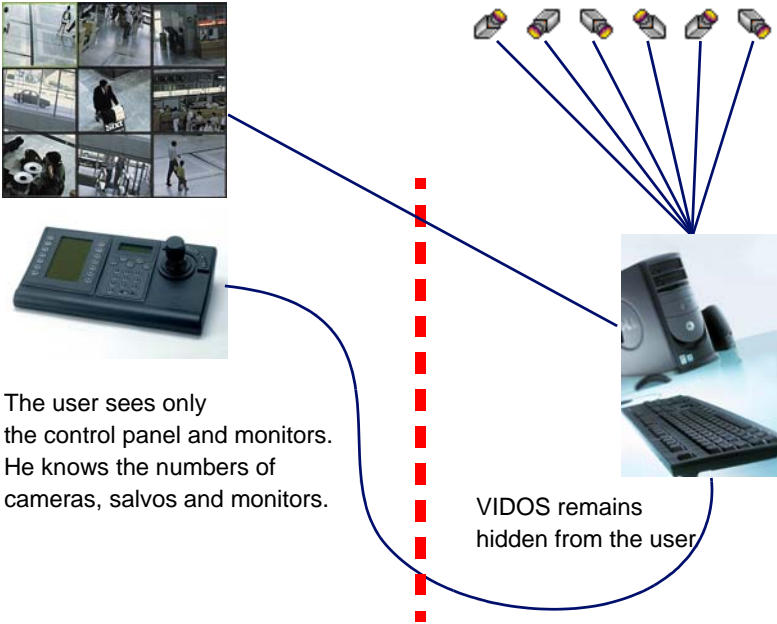
Note

The **Keyboard control** option allows you to test the control panel. This option is described in the DEVICE DOCUMENTATION FOR THE BOSCH INTUIKEY CONTROL PANEL.

VIDOS IntuiKey in use

VIDOS IntuiKey and analog monitors

The digital control panel is used to connect cameras and salvos to analog hardware monitors and to control cameras. When used in this way, the user has no points of contact with the PC.



Working with a site map

In this case, the user works with a digital monitor, e.g. the PC monitor. The mouse and keyboard can be available but do not need to be. The VIDOS program remains hidden from the user. The user can call up site maps using their numbers.

Preparatory work in VIDOS

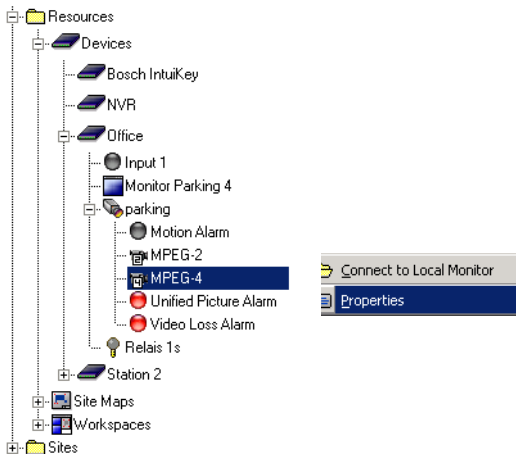
For the user to be able to perform his tasks using the VIDOS IntuiKey, all items to which he is to have access must be given numbers. The assignment of these numbers is described below.

The following table provides an overview of the items that can be operated using VIDOS IntuiKey:

Item	Number/Keyboard ID specified in ...
Camera	Properties dialog box in system tree
Salvo	Properties dialog box in Configuration window
Hardware monitor	Properties dialog box in system tree
Site map	Properties dialog box in system tree
Software monitor window	kbid property in site map editor

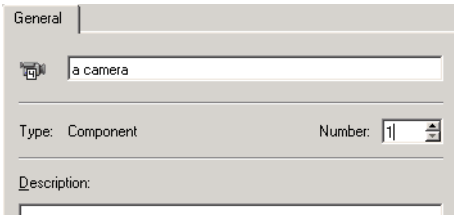
Preparing cameras and hardware monitors

1. Start the VIDOS program.
2. In the system tree, right click on a camera or encoder.



3. Select **Properties**.

4. In the **Properties** dialog box, assign the camera or the encoder a number.



It makes sense to start the numbering from **1** and to assign successive numbers to subsequent cameras. The user can then use the **Previous/Next camera** soft keys to successively connect cameras to a monitor.

5. Close the **Properties** dialog box with **OK**.
6. Repeat steps 2 to 5 for each installed camera to which the user will be given access.
7. Repeat steps 2 to 5 for each installed hardware monitor.

Once again, it makes sense for the first monitor to be given the number **1** and all subsequent monitors to be numbered consecutively.

8. VIDOS is not closed – if the VIDOS IntuiKey is used to make connections, VIDOS controls the connection between cameras and monitors in the background.

Preparing salvos

1. Start the VIDOS program.
2. Click on **System > Configuration...**
You will see the **Configuration** window.
3. Click on **Salvos**.
All salvos are displayed in the right-hand section of the window.
4. Click on **Properties** in the popup menu for the desired salvo.
5. In the **Properties** dialog box, assign the salvo a number.

Salvos are activated in exactly the same way as cameras. A salvo may not be given the same number as a camera.

Note

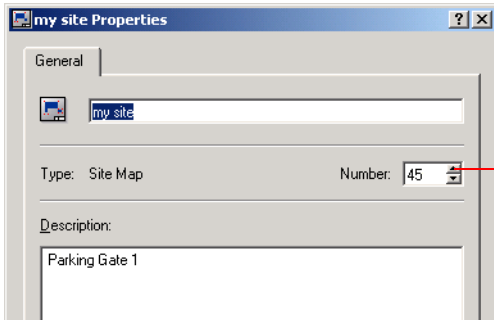
If a salvo has several outputs, output 1 is connected to the selected monitor and all subsequent outputs are successively connected to the next monitors in numerical order.

6. Repeat steps 4 to 5 for each salvo to which the user will be given access.
7. VIDOS is not closed – if the VIDOS IntuiKey is now used to make connections, VIDOS controls the connection between salvos and monitors in the background.

Preparing site maps

For users who work on digital screens, a work area consisting of one or more site maps can be set up in VIDOS. This work area is typically shown in full-screen mode. The user can use VIDOS IntuiKey to navigate between the different site maps.

Each site map is given a number. The procedure for this is as described above under PREPARING CAMERAS AND HARDWARE MONITORS. Below, you can see a typical example of the **Properties** dialog box for a site map:



Number

This number is entered on the control panel to call up this site map.

Hardware and software monitor windows can also be embedded in the site maps, on which the user can operate VIDOS IntuiKey to connect cameras or salvos.

The hardware monitors are given their specific numbers as described above. The software monitor windows are assigned numbers in the site map editor using the **kbid** property. (For details, refer to the separate SITE MAPS documentation).


Note

If several site maps belong to a work area, there may be a monitor window with the number 1 on each of these site maps – but this monitor number may only be assigned once within each individual site map.

Administration is easier if you only assign each number once.

Software monitor windows also provide an option for instant replay of recordings, which can be started and controlled using VIDOS IntuiKey (for details see INSTANT REPLAY AND BACKUP).

Alarm management

The user has the option of responding to alarms that accumulate on the alarm stack. He can acknowledge them using the  (**Alarm**) key, trigger alarm scenarios and disable the alarms.

Document all the operations relating to alarms in a way that will be clear and understandable for the user.

For details of setting up alarm triggers and alarm scenarios, refer to the separate ALARM MANAGEMENT documentation.

Setting up camera presets

The control panel allows the user to call up fixed camera positions, known as presets. For details of setting up presets, refer to the separate documentation VIDOS.

Note

The user can only call up presets if he has been assigned authorization for camera control in VIDOS. However, he can then also use VIDOS IntuiKey to access the **Camera control** menu, which he can use to change the presets.

Recordings and snapshots

The control panel allows the user to create snapshots from live video recordings. Recordings are saved on an NVR, which you need to configure in VIDOS. Snapshots are saved in the default VIDOS directory. You cannot change this path. For details about configuration of an NVR and the management and playback of snapshots, refer to the separate documentation VIDOS.

Instant replay and backup

The control panel gives the user the option of starting instant replay in software monitor windows, if local recording from the camera is active and he has the necessary authorizations. As an administrator, you must ensure that these requirements are met. For details of the configuration of local recordings, refer to the corresponding DEVICE MANUALS (e.g. VideoJet or VIP) and the separate documentation VIDOS.

The user can operate the **Backup** soft key to make backups of replayed recordings on an NVR. To do this, you must configure a corresponding NVR in VIDOS (for details see the separate documentation VIDOS).

Setting up users and authorizations

The control panel allows you to log into VIDOS as a user.

Users and authorizations are set up in VIDOS (for details, see the separate documentation VIDOS). Note that for users who will log in using VIDOS IntuiKey, the login name and password must consist exclusively of figures.

Example: Name 2508, Password 1905.

It is always necessary to log in using the control panel if the **Authorization required** dialog box appears in VIDOS.

Login is also necessary if the previous user pressed the **Log off** soft key in the main menu (this corresponds to the **Change user** operation in VIDOS).

Note

Make sure that users with extended authorizations log off in this way after completing their work on the VIDOS IntuiKey, so that subsequent users cannot perform any unauthorized actions.

Final steps

Before you transfer the workstation to the user, note the following:

- Test the control panel on the workstation under genuine conditions. Have the work area tested by someone else.
- Make sure that if site map based operation is to be used on the PC, no screensaver is active. The user will not be able to exit it.

3

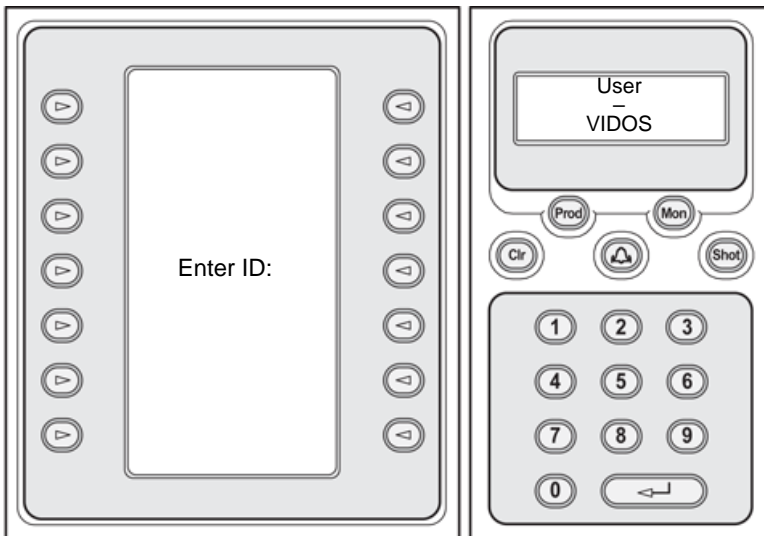
Monitoring with VIDOS IntuiKey

This section is intended for persons who will operate the VIDOS IntuiKey. A workstation with VIDOS and the VIDOS IntuiKey digital control panel is set up.

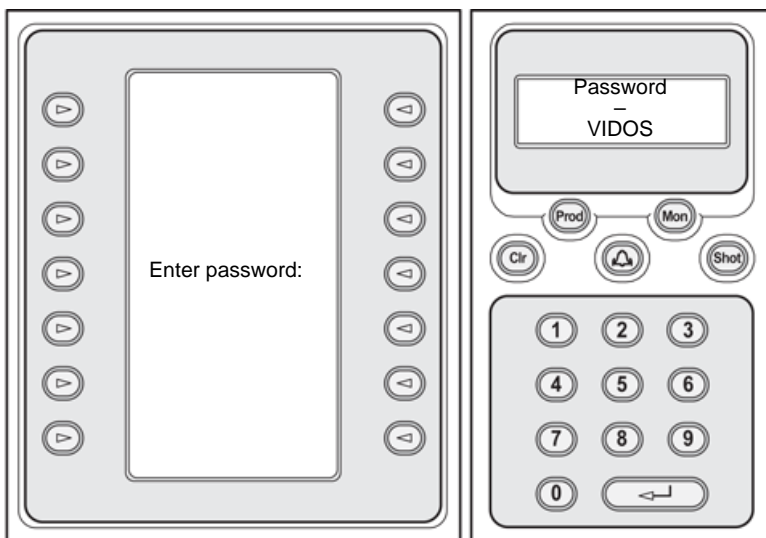
Login

The control panel and, if necessary, the work area are already started and ready for operation.

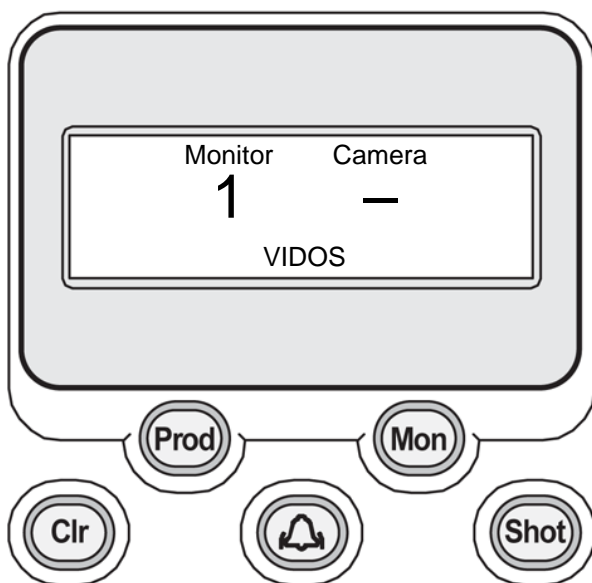
1. If necessary, log in with your user ID. Enter the sequence of digits and confirm by pressing the ↵ (**Enter**) key.



- Then enter the sequence of digits for your password and confirm by pressing the ↵ (**Enter**) key.



- The options for VIDOS are shown in the soft key display. In the status display, **Monitor 1** is shown as active:




Entries with the keyboard

This section explains the keys on the control panel. It illustrates how the keyboard on the control panel can be used to make entries.

Function keys

These function keys are available on the keyboard with predefined functions:

Key	Function
Prod	Starts the search for products that are compatible with VIDOS IntuiKey. Press this key if the connection to VIDOS has been interrupted. Then press the Terminal soft key to return to the VIDOS main menu.
Mon	Press this key to select a monitor.
Clr	Press this key to delete your last entry made with the number keys. Press this key after turning on the control panel to shorten the start-up routine.
 (Alarm)	This key lights up red if alarms have accumulated on the alarm stack. You can process these alarms by repeatedly pressing the key (detailed information is available from your system administrator).
Shot	Press this key to call up a preset (fixed camera position).
↵ (Enter)	Press this key to complete and confirm an entry with the number keys.

Example: Display camera on monitor

This sequence of entries shows an example of how the data sent from a camera is displayed on a monitor.

1. Press **Mon**.

2. Enter the number of the monitor.

If you make a typing error, press **Clr** and enter the number again.

3. Press ↵ (**Enter**) to confirm the entry.

The control panel now expects you to enter the number for the camera.

4. Enter the number of the camera you want to connect.

If you make a typing error, press **Clr** and enter the number again.

5. Press ↵ (**Enter**) to confirm the entry.

The data from the camera is displayed in the selected monitor window.

Note

A salvo is connected in the same way as a camera. Instead of the camera number enter the number of the salvo.

If a salvo has several outputs, output 1 is connected to the selected monitor and all subsequent outputs are successively connected to the next monitors in numerical order.

Controlling the camera

You can control controllable cameras using the joystick as soon as they are connected to the active monitor:

- Push the joystick in the desired direction to pan or tilt the camera.
A firmer push speeds up the camera's movement.
- Rotate the head of the joystick to zoom in or out.

Calling up a camera preset

Fixed positions can be set for controllable cameras. You can enter these so-called presets yourself using the **Camera Control** soft key. You can call up presets as soon as the camera is connected to the active monitor.

1. Press **Shot**.

The prompt **Go to setting** appears in the status display.

2. Enter the number of the desired preset.

If you make a typing error, press **Clr** and enter the number again.

3. Press ↵ (**Enter**) to confirm the entry.

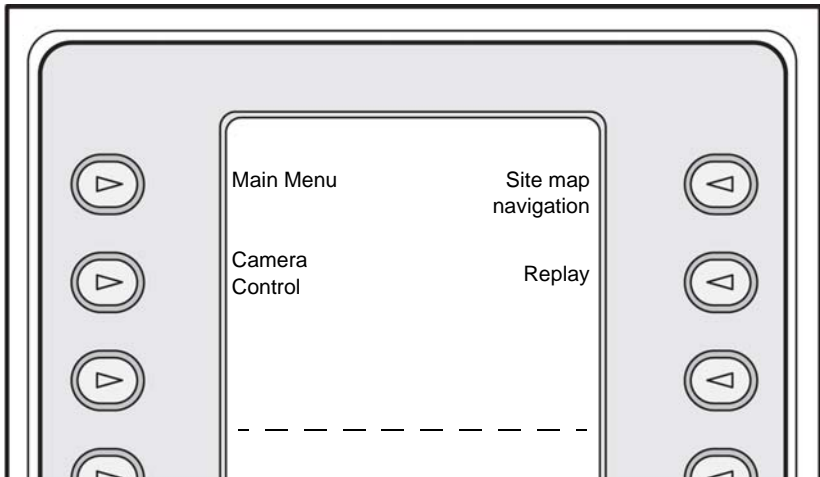
The camera moves to the selected position.

Soft keys

The soft keys are available for selecting from menus or for choosing other commands. The function of a soft key can change. It depends on which menu is currently active.

The current function of a soft key is always indicated in the soft key display.


The upper section of the soft key display always shows the following commands:




The functions of the keys in the lower section of the display change depending on the selected menu.

Main menu

These commands are available in the main menu:

Command	Description
Logout	<p>Logs you off from VIDOS. Press the soft key for approximately 2 seconds.</p> <p>Once you have logged off, a different user can log in (details on page 19).</p>
Talk	<p>You can communicate with a person who is at the location of the active camera (only possible if both locations are set up for voice connections).</p> <p>Hold down the key while you are talking. When the key is not pressed, you will hear the person at the location of the active camera.</p>
<p> Note Turn off the key click as this can result in unwanted noise (for details, refer to general DOCUMENTATION FOR BOSCH INTUIKEY).</p>	
Record	<p>Starts a recording of the data from the active camera. This function is not supported with every configuration. If the active camera is currently recording, the menu option is displayed inversely.</p> <p>Press the key a second time to stop recording. Recording is also stopped if you change to a different camera.</p>
Snapshot	Takes a snapshot of the current scene from the active camera.
Previous camera	The data from the previous/next camera is displayed in the active monitor. The display scrolls through the cameras in the order of their camera numbers. If the first/last camera is displayed, you cannot scroll any further.
Next camera	

 **Note**
Commands associated with a monitor or a camera always relate to the active monitor and the active camera. These are shown in the status display.

Camera control


This soft key calls up the camera control menu. The assignment of the soft keys in the lower section of the soft key display differs depending on the capabilities of the active camera and your authorizations.

Here, you have the opportunity to set and delete presets. With some cameras, you can display a menu on the monitor.

Site map navigation


This menu option is relevant to you if you are working on a digital monitor, e.g. the PC monitor.

This soft key is used to open the menu that allows you to selectively call up a site map. You have the following options:

Command	Description
Load up site map	Site map appears in the status display and you can call up the desired site map by entering the number.
 Note	The display remains unchanged if you have entered a figure that is not assigned to a site map.
Previous site map	This soft key is used to return to the last active site map.

Replay

This menu option is relevant to you if you are working with site maps using embedded software monitor windows. Playback is only possible in software monitor windows.

 **Note**
This function is only available if an active recording is running for the selected camera.

As soon as you press the soft key, instant replay is activated for the selected camera in the active software monitor window. The associated menu appears in the soft key display.

These commands are available in the **Replay** menu:

Command	Description
Previous frame	The previous frame is displayed.
Next frame	The next frame is displayed.
Pause Play	Pauses / continues playback.
Backup	Starts backing up the sequence. To do this an NVR must be configured in VIDOS, otherwise you will see a message in the soft key display.
In point	Sets the starting point for the sequence you want to back up.
Out point	Sets the end point for the sequence you want to back up.

Additional actions

Disconnect

If you no longer want data to be displayed on a monitor, proceed as follows:

1. Press **Mon**.
2. Enter the number of the monitor.
If you make a typing error, press **Clr** and enter the number again.
3. Press ↵ (**Enter**) to confirm the entry.
The control panel now expects you to enter the number for the camera.
4. Enter **0** [zero] as the number of the camera you want to connect.
5. Press ↵ (**Enter**) to confirm the entry.
No more video data is displayed on the monitor.

4

Contacts and Service (Address)

Contact address

Bosch Sicherheitssysteme GmbH
Robert-Koch-Straße 100

85521 Ottobrunn
Germany

E-mail: de.securitysystems@bosch.com
Internet: www.bosch-sicherheitssysteme.de

Service and support

If you have any questions about the programs from the VIDOS Pro Suite, you can find further information on the Internet at:

www.vidos.net

Technical support is available from:

Americas

Bosch Security Systems
130 Perinton Parkway
Fairport, New York, 14450, USA

Phone: +1 585 223 4060

Fax: +1 585 223 9180

E-mail: security.sales@us.bosch.com

Internet: www.boschsecurity.us

Europe, Middle East, Africa

Bosch Security Systems B.V.
P.O. Box 8000
25600 JB Eindhoven, The Netherlands

Phone: +31 (0)40 27 83955

Fax: +31 (0)40 27 86668

E-mail: emea.securitysystems@bosch.com

Internet: www.boschsecurity.com

Asia-Pacific

Bosch Security Systems Pte Ltd
38C Jalan Pemimpin
Singapore 577180

Phone: +65 6319 3450

Fax: +65 6319 3499

E-mail: apr.securitysystems@bosch.com

Internet: www.boschsecurity.com

Index

A

- Alarm processing
 - Method 21
 - preparing 16
- Authentication 17

B

- Backup 16, 26

C

- Camera
 - Calling up preset 23
 - controlling 22
 - display 22
 - next 24
 - preparing 12
 - previous 24
 - Setting up presets 16, 25
- Camera control 25
- Clr 22, 23, 27
- Connection
 - disconnect 27
 - establish 22
- Contact address 29
- Control panel
 - connecting 10
 - integration 8
 - starting 10

E

- Enter 19, 20, 22, 23, 27

F

- Function keys 5, 21

H

- Hardware monitor
 - preparing 12

I

- In point 26
- Instant replay 16, 26

J

- Joystick 5

K

- Key
 - Alarm 5, 16, 21
 - Bell symbol 5, 16, 21
 - Clr 5, 21
 - Enter 5, 21
 - Mon 5, 21
 - Prod 5, 21
 - Shot 5, 21
- Keyboard control 10

L

- License 8
- Log off 17, 24
- Login 19

M

- Main menu 24
- Mon 22, 27

N

- Next Frame 26
- Number keys 5

O		Software monitor window	
Out point	26	preparing	15
P		Status display	5
Pause	26	Symbols	3
Play	26	T	
Preset	16, 23	Talk	24
Previous Frame	26		
Prod	10		
R			
Record			
starting	24		
Recording			
backing up	26		
preparing	16		
Recording backup			
In point	26		
Out point	26		
Replay	25		
S			
Salvo	22		
display	22		
preparing	14		
Screensaver	17		
Service	30		
Setting up authorizations	17		
Setting up users	17		
Shot	23		
Site map			
loading	25		
preparing	15		
previous	25		
Site map Navigation	25		
Snapshot	16, 24		
Soft key display	5		
Soft keys	5, 23		

Bosch Sicherheitssysteme GmbH
Robert-Koch-Straße 100
85521 Ottobrunn
Germany
www.bosch-sicherheitssysteme.de

Bosch Security Systems B.V.
P.O. Box 80002
5600 JB Eindhoven
The Netherlands
www.boschsecuritysystems.com

© 2005 Bosch Sicherheitssysteme GmbH
Subject to change. Printed in Germany.
3504B-IK/0905/en/1



BOSCH
Invented for life